

DAMPER HINGE



HG-JH



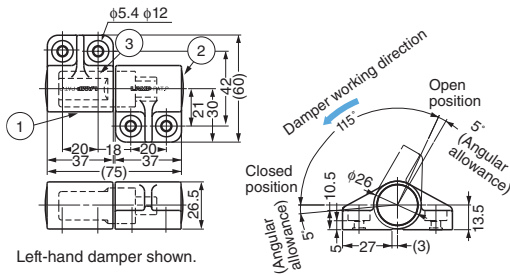
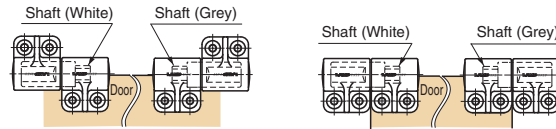
Features

- Soft-close damper keeps lid from slamming shut.
- Surface mount type.
- Caps can be removable, so it can be used for right side or left side.
- With marking colour on the edge to recognize the model.

Remarks

- Sold in pairs.
- Please install door stopper for soft-close damping angle (0 - 115 degree or less).

Installation



No.	Part Name	Material	Finish/Colour
①	Bracket	PBT Resin/Zinc Alloy (ZDC)	Dark Grey
②	Cover	Polypropylene (PP)	Dark Grey
③	Damper	Stainless Steel	-

Item Code	Item Name	Torque Moment (Per pair)		Marking Colour	Weight	Box	Carton
170-092-209	HG-JH25	3 - 5 N·m	30.6 - 51 kgf·cm	Blue	200 g	4 sets	64 sets
170-092-210	HG-JH35	5 - 7 N·m	51 - 71.4 kgf·cm	Red	200 g	4 sets	64 sets

DAMPER HINGE



HG-JHW, HG-JHWG

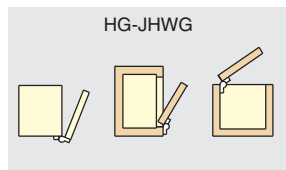
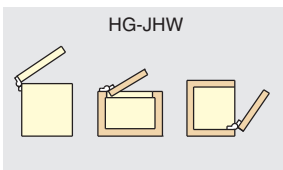
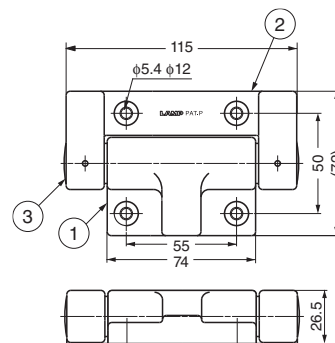
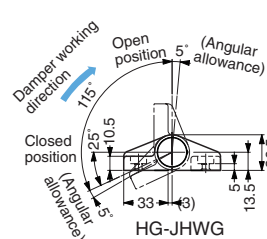
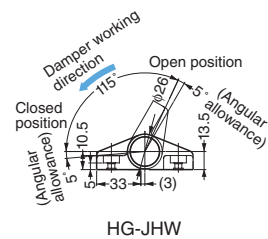


Features

- Soft-close damper keeps lid from slamming shut.
- Surface mount type.
- With marking colour on the edge to recognize the model.

Remarks

Install door stopper for soft-close damping angle (0 - 115 degree or less).



No.	Part Name	Material	Finish/Colour
①	Bracket (body side)	PBT	Emboss/Dark Grey
②	Bracket (shaft side)		
③	Cap	PP	

Item Code	Item Name	Damper Working Direction	Torque Moment/pc		Marking Colour	Box	Carton
170-092-212	HG-JHW50	For Closing	3 - 5 N·m	30.6 - 51 kgf·cm	White	4 pcs	64 pcs
170-092-211	HG-JHW70	For Closing	5 - 7 N·m	51 - 71.4 kgf·cm	Without	4 pcs	64 pcs
170-092-215	HG-JHW50G	For Opening	3 - 5 N·m	30.6 - 51 kgf·cm	White-Red	4 pcs	64 pcs
170-092-216	HG-JHW70G	For Opening	5 - 7 N·m	51 - 71.4 kgf·cm	Red	4 pcs	64 pcs