

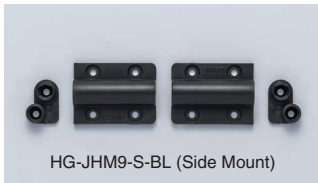
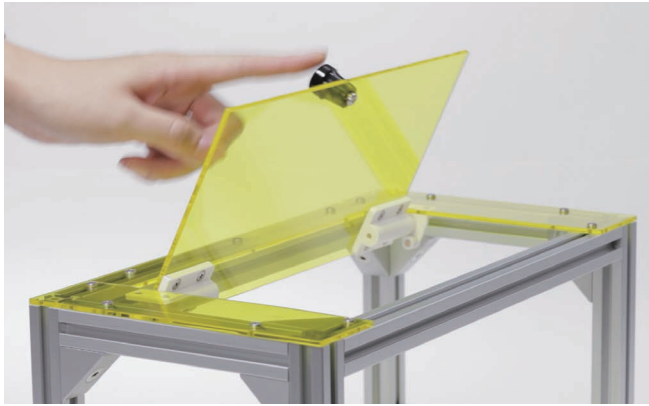


HG-JHM9

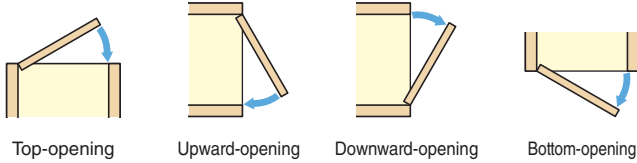
MINI DAMPER HINGE

HINGES

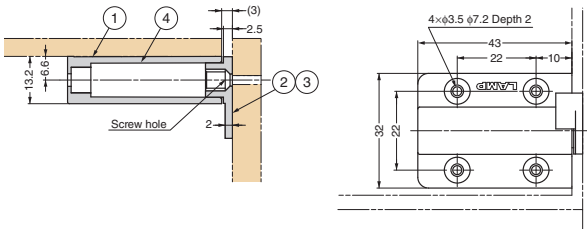
MINI DAMPER HINGE



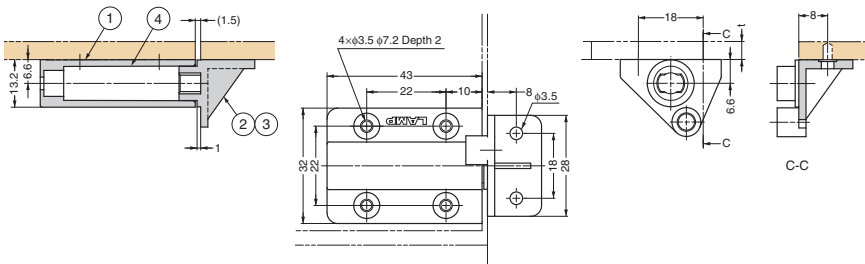
Damping Direction



Side Mount Type



Under Mount Type



Features

- Hinge with built-in damper keeps lids from slamming shut.
- Ideal for small covers of desktop sockets.
- Sold in pairs.

Recommended Screws

- Side Mount: Countersunk head screw M3, Binding head screw M3, Countersunk head tapping screw 3, Binding head tapping screw 3
- Under Mount: Binding head screw M3, Binding head tapping screw 3

Maximum Lid Torque Calculation

$T = M \times L \times 9.8$

T : Maximum lid torque (cN-m)

M : Lid weight (kg)

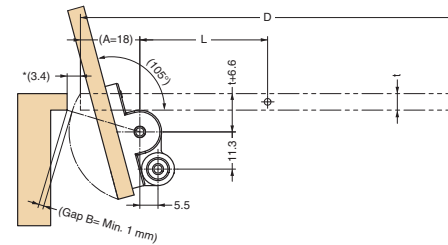
L : Distance from rotation centre to lid centre of gravity (cm)

$L = D/2 - A$

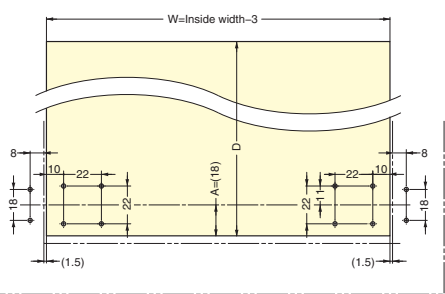
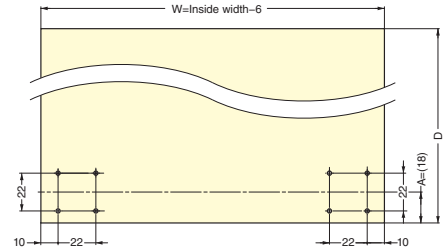
D : Lid length (cm)

A : Length of lid back from rotation centre (cm)

t : Door thickness



- Make sure that the gap B is Min. 1 mm.
- Please provide a stopper to hold the lid at the closed position.
- *In case of t = 5 mm, B = 1 mm.



No.	Part Name	Material	Colour
①	Body	Polyacetal (POM)	Black, White
②	Bracket R	PBT	Black, White
③	Bracket L	PBT	Black, White
④	Damper	Polyacetal (POM)	-

Item Code	Item Name	Type	Colour	Torque Moment (Per pair)		Weight	Box	Carton
170-025-895	HG-JHM9-S-BL	Side Mount	Black	5.4 - 8.6 cN-m	0.55 - 0.88 kgf-cm	29 g	40 sets	440 sets
170-025-896	HG-JHM9-S-WT	Side Mount	White	5.4 - 8.6 cN-m	0.55 - 0.88 kgf-cm	29 g	40 sets	440 sets
170-025-897	HG-JHM9-U-BL	Under Mount	Black	5.4 - 8.6 cN-m	0.55 - 0.88 kgf-cm	31 g	35 sets	385 sets
170-025-898	HG-JHM9-U-WT	Under Mount	White	5.4 - 8.6 cN-m	0.55 - 0.88 kgf-cm	31 g	35 sets	385 sets
170-037-326	HG-JHM9-S4-BL	Side Mount	Black	2.7 - 4.3 cN-m	0.275 - 0.44 kgf-cm	26 g	40 sets	440 sets
170-037-327	HG-JHM9-S4-WT	Side Mount	White	2.7 - 4.3 cN-m	0.275 - 0.44 kgf-cm	26 g	40 sets	440 sets
170-037-328	HG-JHM9-U4-BL	Under Mount	Black	2.7 - 4.3 cN-m	0.275 - 0.44 kgf-cm	28 g	35 sets	385 sets
170-037-329	HG-JHM9-U4-WT	Under Mount	White	2.7 - 4.3 cN-m	0.275 - 0.44 kgf-cm	28 g	35 sets	385 sets

