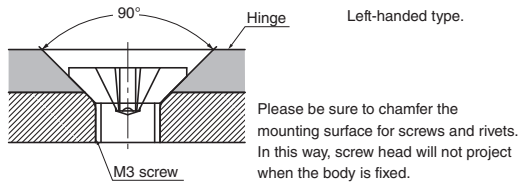
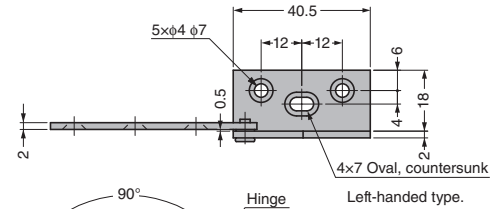
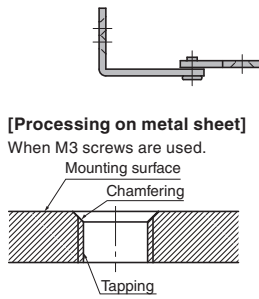
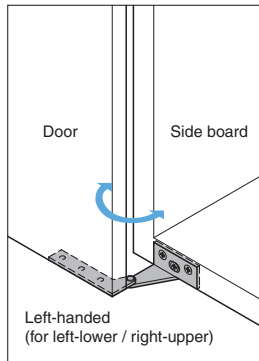
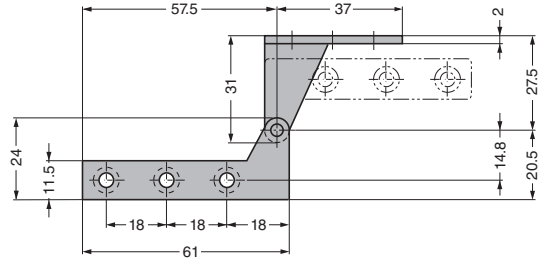


## PIVOT HINGE PL-60 For Overlay Door



**[Remarks]**

- Recommended for use in pairs.



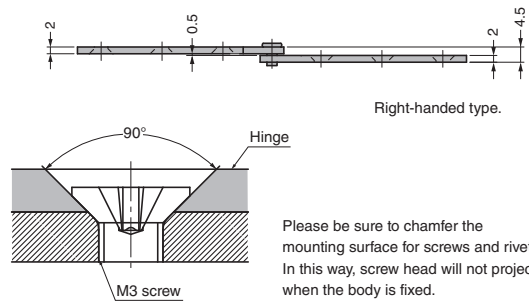
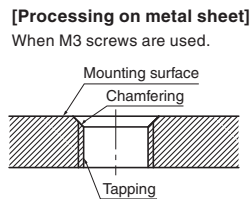
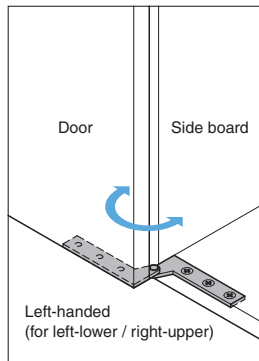
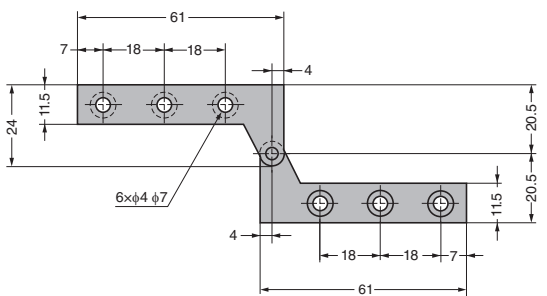
Rt/LS	CAD	Item Code	Item Name	Type	Material	Finish	Door Width	Door Height	Recommended Door Thickness	Door Weight kg/set	Weight (g)	Box (pcs)	Carton (pcs)
G	SD	170-090-263	PL-60R	Right-handed (for right-lower / left-upper)	Stainless Steel	Plain	Max.	Max.	22	Max.	27	100	1000
G	SD	170-090-264	PL-60L	Left-handed (for left-lower / right-upper)	(SUS430)		450	700				100	1000

## PIVOT HINGE PP-60 For Inset Door



**[Remarks]**

- Recommended for use in pairs.



Rt/LS	CAD	Item Code	Item Name	Type	Material	Finish	Door Width	Door Height	Door Weight kg/set	Weight (g)	Box (pcs)	Carton (pcs)
G	SD	170-090-261	PP-60R	Right-handed (for right-lower / left-upper)	Stainless Steel	Plain	Max.	Max.	Max.2.6	22	100	1000
G	SD	170-090-262	PP-60L	Left-handed (for left-lower / right-upper)	(SUS430)		450	700			100	1000