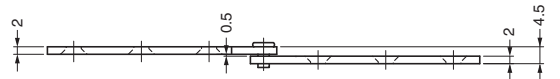
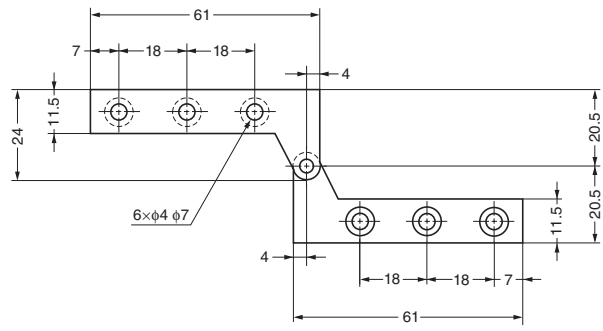


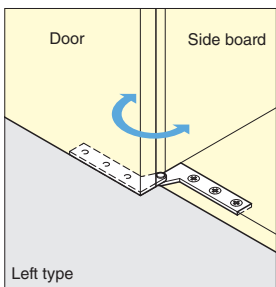
# INSET DOOR PIVOT HINGE

STAINLESS  
430  
STEEL

PP-60

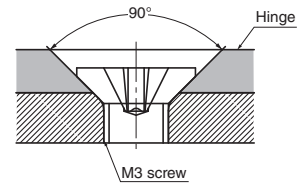
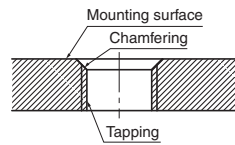


Right type shown.



### [Processing on metal sheet]

When M3 screws are used.



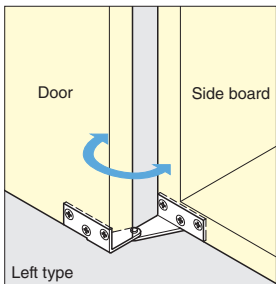
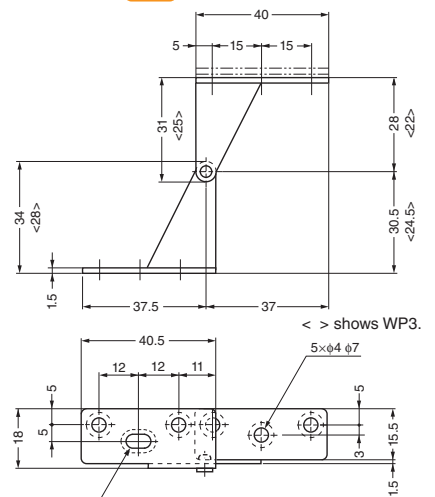
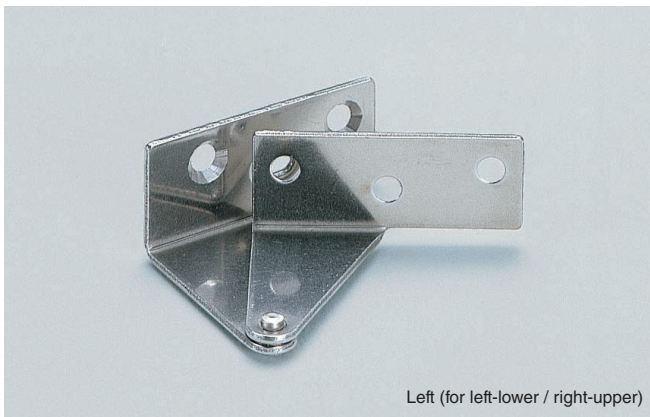
Please be sure to chamfer the mounting surface for screws and rivets. In this way, screw head will not project when the body is fixed.

Item Code	Item Name	Type	Material	Finish	Door Width	Door Height	Door Weight	Weight	Box	Carton
170-090-261	PP-60R	Right (for right-lower / left-upper)	Stainless Steel (SUS430)	Plain	Max. 450	Max. 700	Max. 4 kg	22 g	100 pcs	1000 pcs
170-090-262	PP-60L	Left (for left-lower / right-upper)	Stainless Steel (SUS430)	Plain	Max. 450	Max. 700	/pair	22 g	100 pcs	1000 pcs

# OVERLAY DOOR PIVOT HINGE

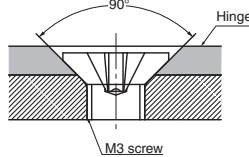
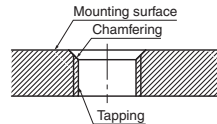
STAINLESS  
430  
STEEL

WP1, WP3



### [Processing on metal sheet]

When M3 screws are used.



Please be sure to chamfer the mounting surface for screws and rivets. In this way, screw head will not project when the body is fixed.

Item Code	Item Name	Type	Material	Finish	Door Width	Door Height	Door Thickness	Door Weight	Weight	Box	Carton
170-090-257	WP1R	Right (for right-lower / left-upper)	Stainless Steel (SUS430)	Plain	Max. 300	Max. 700	Max. 24	Max. 2.7 kg	23 g	100 pcs	1000 pcs
170-090-258	WP1L	Left (for left-lower / right-upper)	Stainless Steel (SUS430)	Plain	Max. 300	Max. 700	Max. 24	/pair	23 g	100 pcs	1000 pcs
170-090-259	WP3R	Right (for right-lower / left-upper)	Stainless Steel (SUS430)	Plain	Max. 300	Max. 700	Max. 18	Max. 2.7 kg	21 g	100 pcs	1000 pcs
170-090-260	WP3L	Left (for left-lower / right-upper)	Stainless Steel (SUS430)	Plain	Max. 300	Max. 700	Max. 18	/pair	21 g	100 pcs	1000 pcs