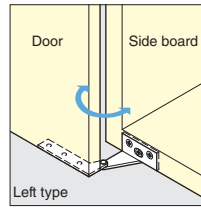
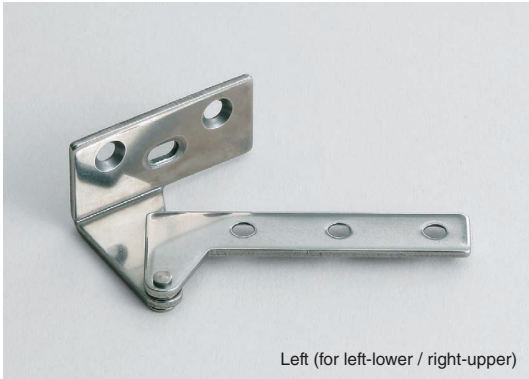


OVERLAY DOOR PIVOT HINGE

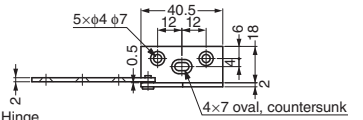
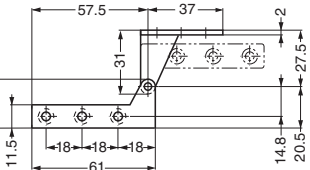
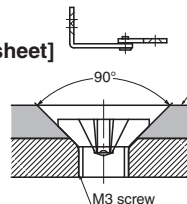
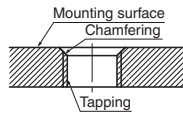
STAINLESS
430
STEEL

PL-60



[Processing on metal sheet]

When M3 screws are used.



Left type shown.

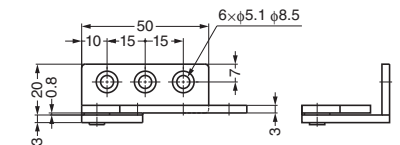
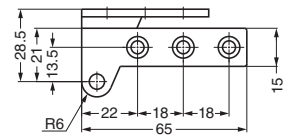
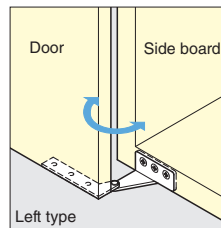
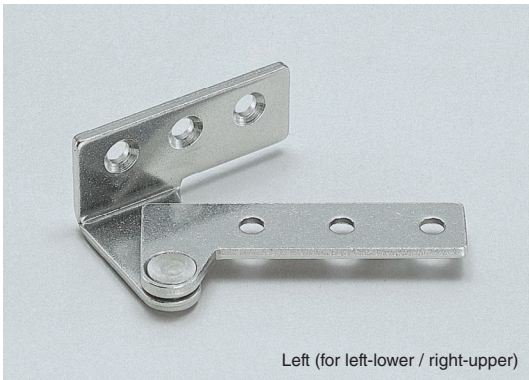
Please be sure to chamfer the mounting surface for screws and rivets. In this way, screw head will not project when the body is fixed.

Item Code	Item Name	Type	Material	Finish	Door Width	Door Height	Door Thickness	Door Weight	Weight	Box	Carton
170-090-263	PL-60R	Right (for right-lower / left-upper)	Stainless Steel (SUS430)	Plain	Max. 450	Max. 700	22	Max. 4 kg	27 g	100 pcs	1000 pcs
170-090-264	PL-60L	Left (for left-lower / right-upper)	Stainless Steel (SUS430)	Plain	Max. 450	Max. 700	22	/pair	27 g	100 pcs	1000 pcs

OVERLAY DOOR PIVOT HINGE

STAINLESS
430
STEEL

PL-65



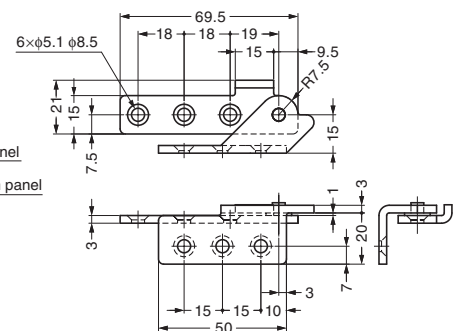
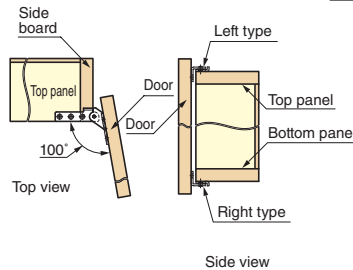
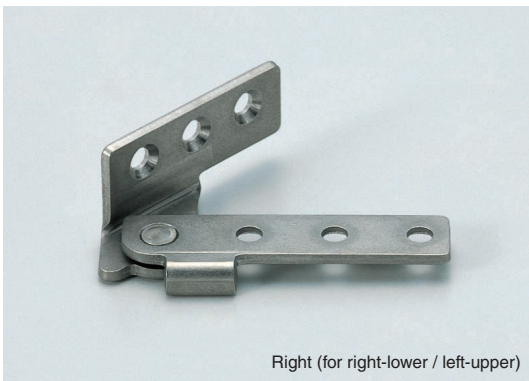
Left type shown.

Item Code	Item Name	Type	Material	Finish	Door Width	Door Height	Door Thickness	Door Weight	Weight	Box	Carton
170-099-190	PL-65R	Right (for right-lower / left-upper)	Stainless Steel (SUS430)	Plain	Max. 450	Max. 700	22	Max. 4 kg	55 g	40 pcs	400 pcs
170-099-191	PL-65L	Left (for left-lower / right-upper)	Stainless Steel (SUS430)	Plain	Max. 450	Max. 700	22	/pair	55 g	40 pcs	400 pcs

OVERLAY DOOR PIVOT HINGE

STAINLESS
304
STEEL

PL-100



Left type shown.

Item Code	Item Name	Type	Material	Finish	Door Width	Door Height	Door Weight	Weight	Box	Carton
170-099-379	PL-100R	Right (for right-lower / left-upper)	Stainless Steel (SUS304)	Polished	Max. 600	Max. 750	Max. 6 kg	55 g	70 pcs	420 pcs
170-099-380	PL-100L	Left (for left-lower / right-upper)	Stainless Steel (SUS304)	Polished	Max. 600	Max. 750	/pair	55 g	70 pcs	420 pcs