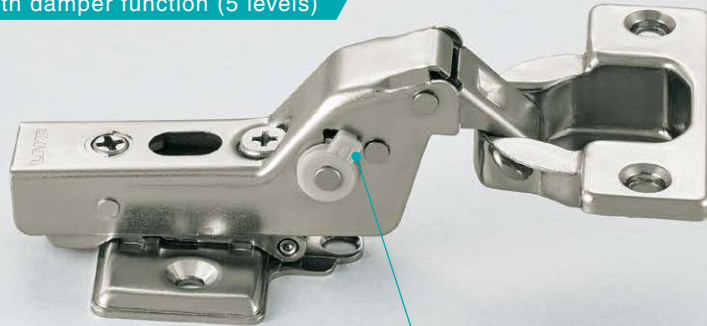


Inset / 93° opening

LAMP

With damper function (5 levels)



Damper power adjustment lever

The picture above shows a combination of a concealed hinge (with damper) and a mounting plate (sold separately).

Cup size $\phi 35$
Bore Depth 11mm Door Thickness 15-20mm

3D adjustment
Depth: +1.5, -2.5mm, Vertical: ± 2.5 mm,
Overlay: +0, -4mm

Sold separately: ▶ P.17 -

- Mounting plates Glass door face plate
- Countersunk head tapping screw 3.5 x 15NI Other
- Recommended screws: (Countersunk head wood/tapping screw 3.5)

Body

Mounting plate

Option parts

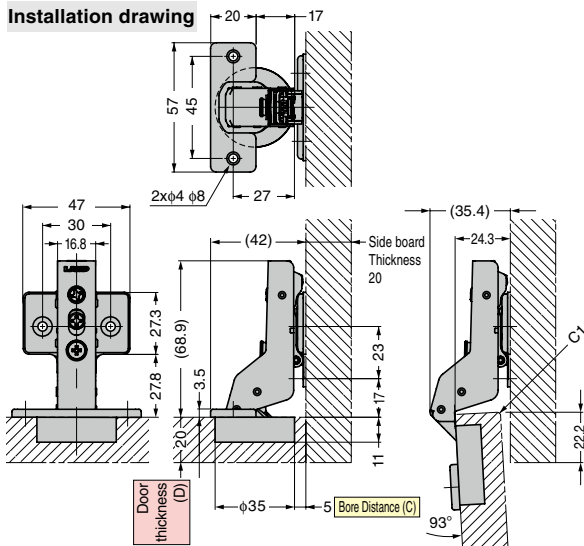
Standard doors

Thick doors

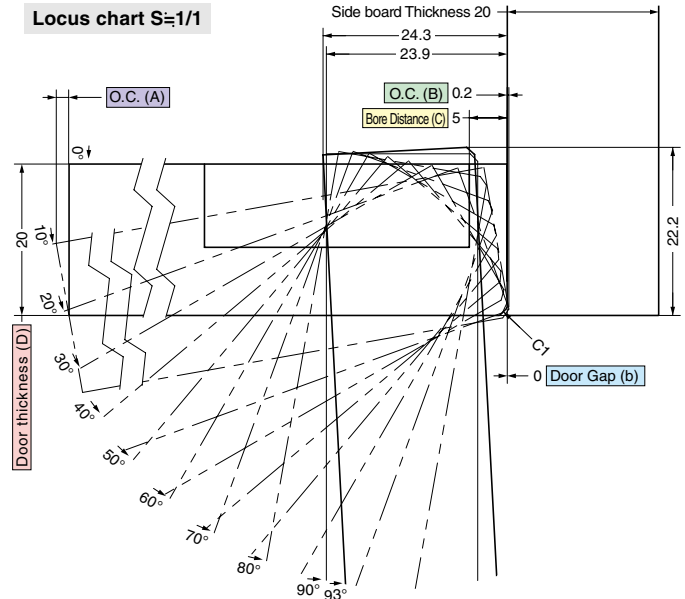
Glass doors

▶ The installation drawing and locus chart shown are for a 20 mm thick door and side board, a 5mm bore distance and inset installation.

Installation drawing



Locus chart $S=1/1$



Drawings show a hinge, face plate and 360-P4W-30T mounting plate (sold separately).

Opening Clearance (O.C.)

Clearances for door edge O.C. (A) and hinge side O.C. (B) are necessary. O.C. (A) and (B) change depending on door thickness and bore distance (C). Refer to locus chart and tables below when designing cabinets.

Opening clearance (B), door thickness (D) and bore distance (C) relationship

Door Thickness (D)	Bore Distance (C)		
	3	4	5
15	0	0	0
16	0	0	0
17	0	0	0
18	0	0	0
19	0.1	0.1	0.1
20	0.3	0.3	0.2
21*	0.5	0.4	0.4
22*	1.0	0.7	0.7
O.C. (B)			

* The table above shows O.C. (B) for C1 chamfering (chamfer plane).

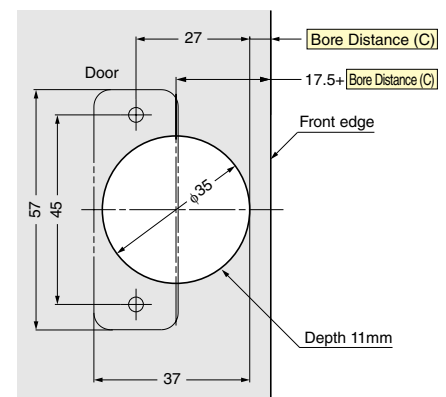
* Please refer to the locus chart if door thickness is over 20mm. O.C. (B) can be made smaller by R chamfering (round chamfer) and C chamfering (chamfer plane) on the door.

Bore distance (C) and Door Gap (b) relationship

Bore Distance (C)	3	4	5
Door Gap (b)	2	1	0

Door Gap (b) adjustment (+4mm) by turning the overlay adjustment screw. Please check required O.C. (B) at the table below.

Cut out dimensions (wooden doors)



Opening clearance (A) and door width relationship (for 20mm thick door)

Door Width	300	400	500	600
O.C. (A)	0.44	0.32	0.25	0.21

Item code	Item name	Opening angle	Type	Material	Finish	Carton
160-026-843	360-D26-OT	93°	With damper (5 levels)	Steel	Nickel	100pcs
160-026-839	360-26-OT		Without catch			
160-026-835	360-C26-OT		With catch			
160-042-392	360-U26-OT		Sprung-open			200pcs