

## INSET GLASS DOOR HINGE



## XL-GH03-48-0



### Features

Hinge for medium size glass/acrylic doors.

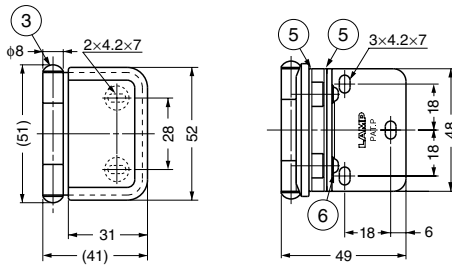
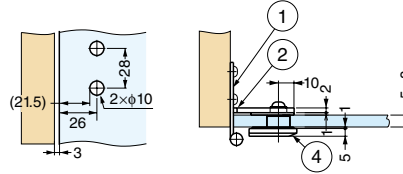
### Remarks

Recommended for use in pairs.

### Parts Included

- Washer (2 pcs.)
- Truss head screw M4x12 (2 pcs.)

### Cut Out Dimensions



No.	Part Name	Material	Finish/Colour	
			CR	GC
①	Hinge Plate	Stainless Steel (SUS304)	Mirror	Gold, Clear
②	Arm	Stainless Steel (SUS304)	Mirror	Gold, Clear
③	Shaft	Stainless Steel (SUS304)	Mirror	Plain, Gold, Clear
④	Plate	Zinc Alloy (ZDC)	Chrome	Gold, Clear
⑤	Spacer	Polyethylene	Natural	Natural
⑥	Screw	Stainless Steel (SUS304)	Plain	Plain, Gold, Clear

Item Code	Item Name	Door Width	Door Height	Glass Thickness	Door Weight	Weight	Box	Carton
170-098-651	XL-GH03-48-0CR	Max. 650	Max. 900	5, 6, 8	Max. 12 kg/2 pcs	132 g	10 pcs	100 pcs
170-098-652	XL-GH03-48-0GC	Max. 650	Max. 900	5, 6, 8	Max. 12 kg/2 pcs	144 g	10 pcs	100 pcs

## HALF OVERLAY GLASS DOOR HINGE



## XL-GH03-48-8



### Features

Hinge for medium size glass/acrylic doors.

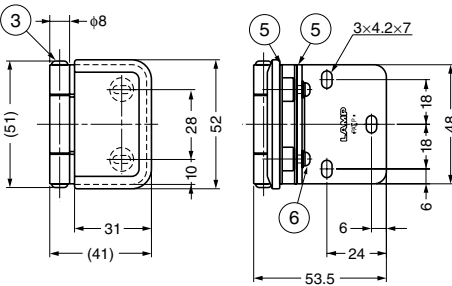
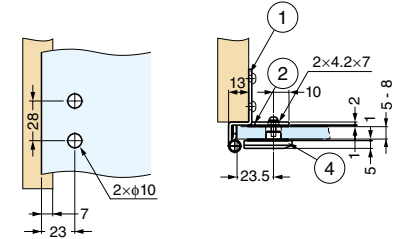
### Remarks

Recommended for use in pairs.

### Parts Included

- Washer (2 pcs.)
- Truss head screw M4x12 (2 pcs.)

### Cut Out Dimensions



No.	Part Name	Material	Finish/Colour	
			CR	GC
①	Hinge Plate	Stainless Steel (SUS304)	Mirror	Gold, Clear
②	Arm	Stainless Steel (SUS304)	Mirror	Gold, Clear
③	Shaft	Stainless Steel (SUS304)	Mirror	Plain, Gold, Clear
④	Plate	Zinc Alloy (ZDC)	Chrome	Gold, Clear
⑤	Spacer	Polyethylene	Natural	Natural
⑥	Screw	Stainless Steel (SUS304)	Plain	Plain, Gold, Clear

Item Code	Item Name	Door Width	Door Height	Glass Thickness	Door Weight	Weight	Box	Carton
170-098-649	XL-GH03-48-8CR	Max. 650	Max. 900	5, 6, 8	Max. 12 kg/2 pcs	141 g	10 pcs	100 pcs
170-098-650	XL-GH03-48-8GC	Max. 650	Max. 900	5, 6, 8	Max. 12 kg/2 pcs	148 g	10 pcs	100 pcs