

GLASS DOOR HINGE



XL-GH01-600



Features

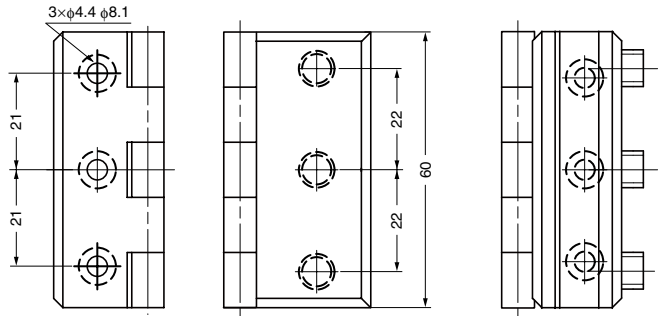
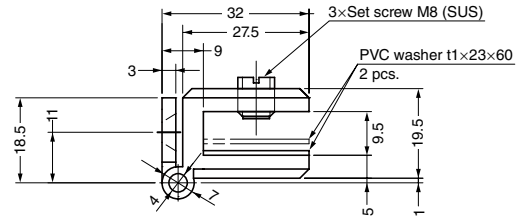
Pre-drilling on glass/acrylic not required.

Remarks

Use 2 washers for 4 mm door thickness.

Parts Included

Countersunk head wood screw 3.5x20



Item Code	Item Name	Material	Finish	Door Width	Door Height	Glass Thickness	Door Weight	Weight	Box	Carton
170-080-501	XL-GH01-600	Stainless Steel (SCS13)	Mirror	Max. 450	Max. 1300	4, 5, 6, 8	Max. 11 kg/2 pcs	188 g	10 pcs	50 pcs

*SCS13 is equivalent of SUS304.

HINGES FOR GLASS DOORS

GLASS DOOR HINGE

GLASS DOOR HINGE



XL-GH01-250



Features

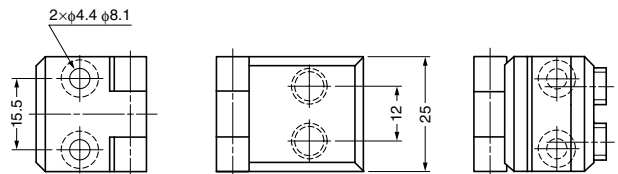
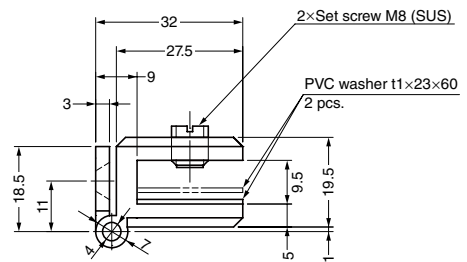
Pre-drilling on glass/acrylic not required.

Remarks

Use 2 washers for 4 mm door thickness.

Parts Included

Countersunk head wood screw 3.5x20



Item Code	Item Name	Material	Finish	Door Width	Door Height	Glass Thickness	Door Weight	Weight	Box	Carton
170-080-500	XL-GH01-250	Stainless Steel (SCS13)	Mirror	Max. 400	Max. 600	4, 5, 6, 8	Max. 4.8 kg/2 pcs	60 g	10 pcs	100 pcs

*SCS13 is equivalent of SUS304.