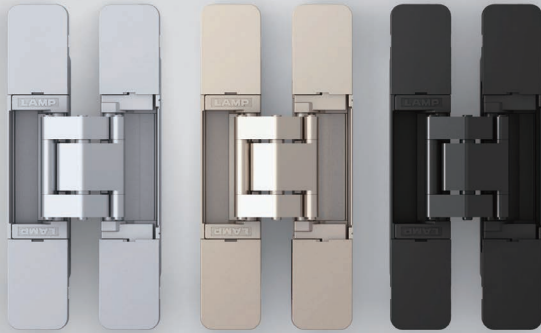


# 3-WAY ADJUSTABLE CONCEALED HINGE



# HES3D-E160



### Features

- Shallow drilling depth enables easy drilling of the door and frame.
- Three-way adjustment feature enables fine adjustment up, down, left, right, forward and back.
- The hinge can be divided between the door and frame and the door can be temporarily fastened to the frame, making it easy to hang the door.
- The structure is designed to prevent the door from sagging.
- Screw covers can be purchased separately in the event that the original covers are broken or lost. Contact us for details.

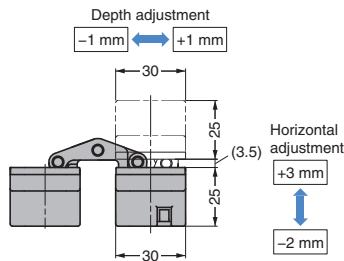
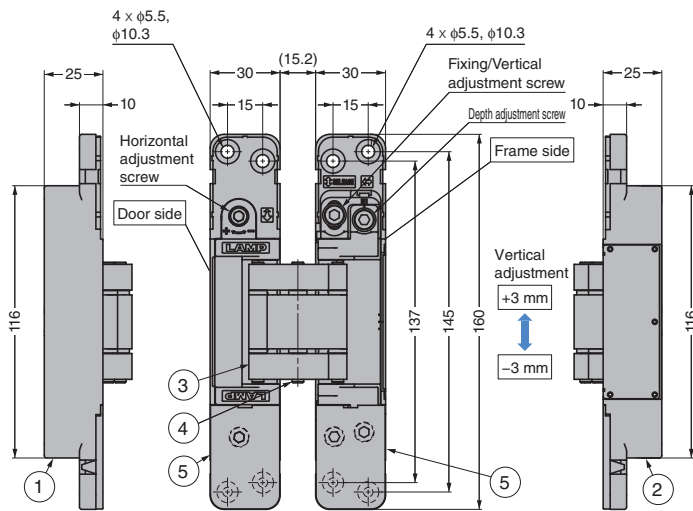
### Remarks

- Read all remarks on handling thoroughly before use.
- When using with a door damper and/or closer, select the LAPCON LDD-S Door Damper, LAPCON LDD-V Door Damper and/or LAPCON LDC-N2 Closer.
- Select a door weight within a range satisfying the conditions of both the hinge and the door damper and/or closer.
- Some closers may cause the door to move awkwardly or not close fully. Test the product before purchase.
- When using a closer with a stopper, be sure to use a door stopper too (floor mounting type, wall mounting type, etc.). Install the door stopper in a position further forward than the stopper of the closer, and between the centre and end of the door.

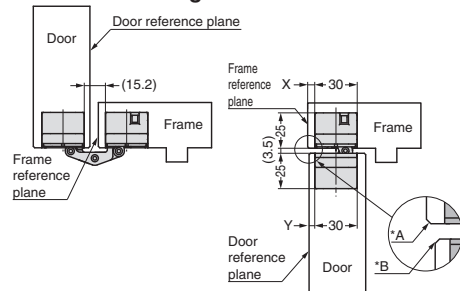
### Parts Included

- Size 5 x 25 cross-recessed flat head tapping screws (stainless steel) (8 screws per hinge)
- Nominal size 4 hex bar spanner

This figure shows this product with the upper screw cover removed.



### Installation Drawing

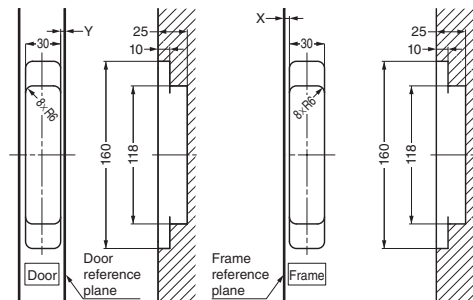


\*The door and frame need to be chamfered based on the machining margin.

Y: Door machining margin	B: Door chamfering	X: Frame machining margin	A: Frame chamfering
4 and under	1	5 and under	1
4 and under	2	6	2
4 and under	2	7	3
5	3	5 and under	3
5	3	6	4

(Reference values)

### Cut Out Dimensions



No.	Part Name	Material	Finish/Colour		
			DC	DN	BL
①	Body	Zinc Alloy (ZDC)	Satin Chrome	Satin Nickel	Baked Enamel
②	Base Frame				
③	Arm	Aluminium Alloy			Black
④	Shaft	Stainless Steel	Plain	Plain	Plain
⑤	Screw Covers	ABS	Silver	Champagne Gold	Black

CAD	Item Code	Item Name	Colour	Door Specs			Load Capacity				Opening Angle
				Width (mm)	Height (mm)	Thickness (mm)	N / 2 pcs	kgf / 2 pcs	N / 3 pcs	kgf / 3 pcs	
2D/3D	170-046-000	HES3D-E160DC	Silver	Max. 900	Max. 2400	Min. 36	539	55	686	70	180°
2D/3D	170-046-001	HES3D-E160DN	Champagne Gold								
2D/3D	170-046-002	HES3D-E160BL	Black								

