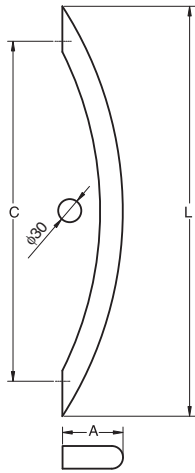


STAINLESS STEEL DOOR HANDLE



DSI-1630



Features

- For use with DSI mounting kits (Sold separately, below).
- Please specify Interior/Exterior type when ordering:
 - Posts for Exterior handles are threaded to accept screws.
 - Posts for Interior handles have set screws for DSI mounting kits.
- Similar style to 30 series cabinet handles (P.27).

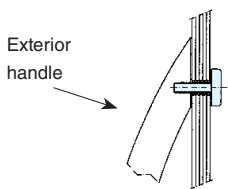
Remarks

- Made to order.
- Minimum quantity 20 pieces.

Material	Finish
304 Stainless Steel	Satin

Item Code		Item Name		L	C	A	Weight	Box	Carton
Interior	Exterior	Interior	Exterior						
-	-	DSI-1630-30-25I	DSI-1630-30-25E	314	250	66	0.8 kg	1 pc	10 pcs
-	-	DSI-1630-30-35I	DSI-1630-30-35E	430	350	74	1.2 kg		
-	-	DSI-1630-30-45I	DSI-1630-30-45E	542	450	80	1.5 kg		
-	-	DSI-1630-30-60I	DSI-1630-30-60E	721	600	79	1.8 kg		

MOUNTING KIT FOR DSI SERIES DOOR HANDLES

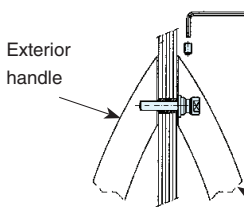


Installation for Wood/Metal/Glass door

Max. Door thickness:

- | | |
|---------------------|---------------------|
| DSI-1630-30: 100 mm | DSI-3310-30: 60 mm |
| DSI-2000-20: 80 mm | DSI-3330-30: 100 mm |
| DSI-2000-30: 80 mm | DSI-4400-15: 60 mm |
| DSI-3310-15: 60 mm | DSI-4400-20: 60 mm |
| DSI-3310-20: 60 mm | DSI-4400-30: 60 mm |

Item Code	Item Name	For Use With
-	DKIT-2/15-1	DSI-3310-15
-	DKIT-2/15-2	DSI-4400-15
-	DKIT-2/20-1	DSI-2000-20/DSI-3310-20
-	DKIT-2/20-2	DSI-4400-20
-	DKIT-2/30-1	DSI-1630-30/DSI-2000-30/DSI-3310-30/DSI-3330-30
-	DKIT-2/30-2	DSI-4400-30

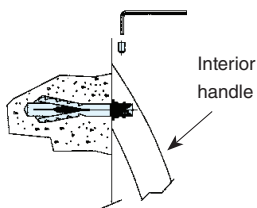


Installation for Back-to-back Mount

Max. Door thickness:

- | | |
|---------------------|---------------------|
| DSI-1630-30: 90 mm | DSI-3310-30: 100 mm |
| DSI-2000-20: 100 mm | DSI-3330-30: 100 mm |
| DSI-2000-30: 45 mm | DSI-4440-15: 100 mm |
| DSI-3310-15: 100 mm | DSI-4440-20: 100 mm |
| DSI-3310-20: 100 mm | DSI-4440-30: 100 mm |

Item Code	Item Name	For Use With
-	DKIT-4/15-1	DSI-3310-15
-	DKIT-4/15-2	DSI-4400-15
-	DKIT-4/20-1	DSI-2000-20/DSI-3310-20
-	DKIT-4/20-2	DSI-4400-20
-	DKIT-4/30-1	DSI-1630-30/DSI-2000-30/DSI-3310-30/DSI-3330-30
-	DKIT-4/30-2	DSI-4400-30



Installation for Wall-mount or Concrete

Item Code	Item Name	For Use With
-	DKIT-5/15	DSI-3310-15/DSI-4400-15
-	DKIT-5/20	DSI-2000-20/DSI-3310-20/DSI-4400-20
-	DKIT-5/30	DSI-1630-30/DSI-2000-30/DSI-3310-30/DSI-3330-30/DSI-4400-30