

STAINLESS STEEL HANDLE



KPH

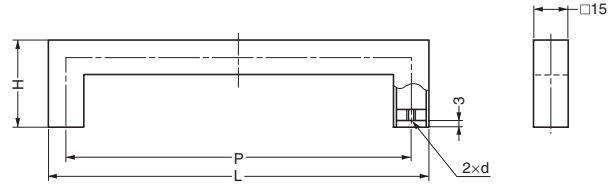


Features

Light handle with hollow body.

Recommended Screw

$d \times (\text{Door thickness} + 10 - 15)$

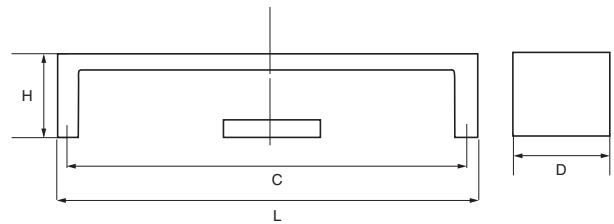


| Item Code | Item Name | Material | Finish | L | H | P | d | Weight | Box | Carton |
|-------------|-----------|--------------------------|--------|-----|----|-----|----|--------|--------|---------|
| 100-019-195 | KPH-160 | Stainless Steel (SUS304) | Satin | 176 | 40 | 160 | M4 | 80 g | 10 pcs | 100 pcs |
| 100-019-196 | KPH-192 | Stainless Steel (SUS304) | Satin | 208 | 40 | 192 | M4 | 95 g | 10 pcs | 100 pcs |
| 100-019-197 | KPH-224 | Stainless Steel (SUS304) | Satin | 240 | 50 | 224 | M5 | 125 g | 10 pcs | 100 pcs |
| 100-019-198 | KPH-256 | Stainless Steel (SUS304) | Satin | 272 | 50 | 256 | M5 | 133 g | 10 pcs | 100 pcs |
| 100-019-199 | KPH-288 | Stainless Steel (SUS304) | Satin | 304 | 50 | 288 | M5 | 142 g | 10 pcs | 100 pcs |

STAINLESS STEEL HANDLE



40 SERIES



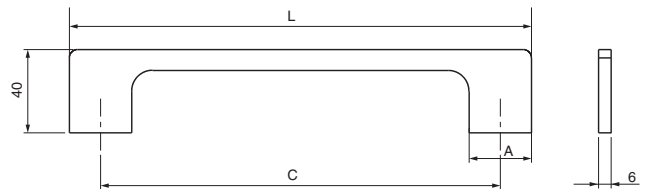
| Item Code | Item Name | L | C | H | D | Weight | Box | Carton |
|-----------|-----------|-----|-----|----|----|--------|--------|--------|
| - | 40128 | 138 | 128 | 35 | 40 | 166 g | 10 pcs | 40 pcs |
| - | 40160 | 170 | 160 | | | 198 g | | |
| - | 40192 | 202 | 192 | | | 219 g | | |

| Material | Finish |
|---------------------|--------|
| 304 Stainless Steel | Satin |

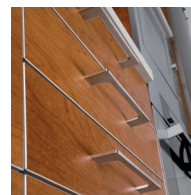
STAINLESS STEEL HANDLE



DSI-110



| Item Code | Item Name | C | L | A | Weight | Box | Carton |
|-----------|-------------|-----|-----|----|--------|--------|---------|
| - | DSI-110- 96 | 96 | 126 | 30 | 135 g | 25 pcs | 250 pcs |
| - | DSI-110-128 | 128 | 158 | | 152 g | | |
| - | DSI-110-160 | 160 | 190 | | 190 g | | |
| - | DSI-110-192 | 192 | 222 | | 230 g | 10 pcs | 100 pcs |
| - | DSI-110-320 | 320 | 350 | | 380 g | | |
| - | DSI-110-512 | 512 | 542 | | 610 g | | |



| Material | Finish |
|---------------------|--------|
| 304 Stainless Steel | Satin |