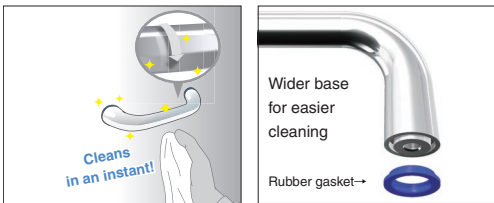


# STAINLESS STEEL HANDLE

HGH

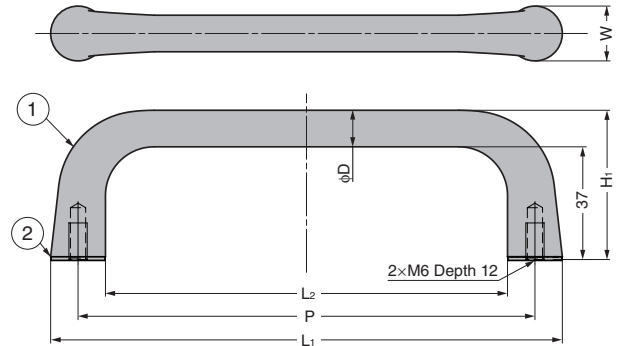


The handle shape and the mirror finish are designed to prevent dust accumulation. This helps to suppress bacterial propagation and allows for faster and easier cleaning.

The silicone rubber mount provides a snug fit between the handle and the mounting surface.

### Features

- Wider base for easy cleaning.
- Silicone rubber gasket is compliant with the Food Sanitation Act.



No.	Part Name	Material	Finish/Colour
①	Body	Stainless Steel (SCS13)	Mirror
②	Gasket	Silicone rubber (Q)	Blue

CAD	Item Code	Item Name	L <sub>1</sub>	L <sub>2</sub>	W	H <sub>1</sub>	P	D	Load Capacity N	Load Capacity kgf	Weight (g)
2020	100-037-021	HGH-115SM	130	100	15	47	115	10	400	40.8	144
2020	100-037-022	HGH-150SM	168	132	18	49	150	12	500	51	244
2020	100-037-023	HGH-200SM	222.5	177.5	22.5	52	200	15			463

# STAINLESS STEEL HANDLE

SUS

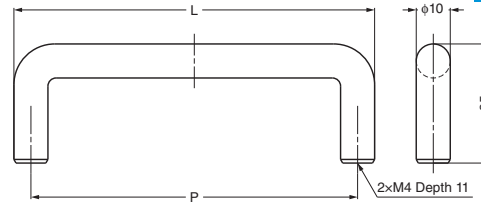
H-35



Mirror

### Parts Included

Truss head screw M4x45



RoHS	CAD	Item Code	Item Name	Material	Finish	L	P	Weight (g)	Box (pcs)	Carton (pcs)
2020	2020	100-036-723	H-35-96-SS	Stainless Steel (SUS304)	Satin	106	96	86	25	-
2020	2020	100-036-724	H-35-96-SM		Mirror	106	96	86	25	-
2020	2020	100-036-725	H-35-128-SS		Satin	138	128	106	25	-
2020	2020	100-036-726	H-35-128-SM		Mirror	138	128	106	25	-
2020	2020	100-036-727	H-35-160-SS		Satin	170	160	125	25	-
2020	2020	100-036-728	H-35-160-SM		Mirror	170	160	125	25	-
2020	2020	100-036-729	H-35-192-SS		Satin	202	192	145	25	-
2020	2020	100-036-730	H-35-192-SM		Mirror	202	192	145	25	-
2020	2020	100-036-731	H-35-288-SS		Satin	298	288	204	25	-
2020	2020	100-036-732	H-35-288-SM		Mirror	298	288	204	25	-

# STAINLESS STEEL HANDLE

SUS

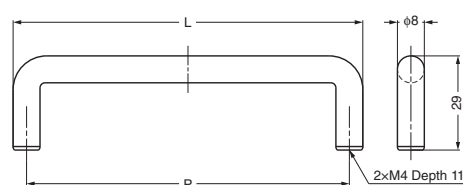
H-29



Satin

### Parts Included

Truss head screw M4x45



RoHS	CAD	Item Code	Item Name	Material	Finish	L	P	Weight (g)	Box (pcs)	Carton (pcs)
2020	2020	100-036-733	H-29-64-SS	Stainless Steel (SUS304)	Satin	72	64	39	25	-
2020	2020	100-036-734	H-29-64-SM		Mirror	72	64	39	25	-
2020	2020	100-036-735	H-29-96-SS		Satin	104	96	52	25	-
2020	2020	100-036-736	H-29-96-SM		Mirror	104	96	52	25	-
2020	2020	100-036-737	H-29-128-SS		Satin	136	128	64	25	-
2020	2020	100-036-738	H-29-128-SM		Mirror	136	128	64	25	-
2020	2020	100-036-739	H-29-160-SS		Satin	168	160	77	25	-
2020	2020	100-036-740	H-29-160-SM		Mirror	168	160	77	25	-
2020	2020	100-036-741	H-29-192-SS		Satin	200	192	90	25	-
2020	2020	100-036-742	H-29-192-SM		Mirror	200	192	90	25	-