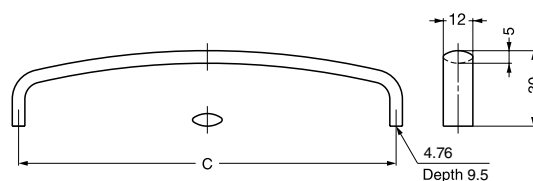


STAINLESS STEEL HANDLE



KC-R



HANDLES,
PULLS & KNOBS

Item Code	Item Name	C	Weight	Box	Carton
100-023-418	100-023-422 KC-R635/M KC-R635/S	88.9	60 g	20 pcs	200 pcs
100-023-419	100-023-423 KC-R640/M KC-R640/S	101.6	67 g		
100-023-420	100-023-424 KC-R650/M KC-R650/S	127	78 g		
100-023-421	100-023-425 KC-R660/M KC-R660/S	152.4	88 g		

Material	Finish
316 Stainless Steel	Mirror (M) Satin (S)

STAINLESS STEEL HANDLE



XL-JS

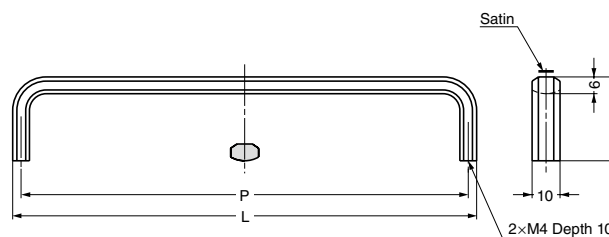


Features

Exquisite combination of satin and mirror finishes

Parts Included

Truss head screw M4x25 (SUS)



STAINLESS STEEL HANDLE

Item Code	Item Name	Material	Finish	L	P	H	Weight	Box	Carton
100-012-792	XL-JS165TT	Stainless Steel (SUS316)	Mirror and Satin Combination	166	160	30	87 g	15 pcs	150 pcs
100-012-793	XL-JS260TT	Stainless Steel (SUS316)	Mirror and Satin Combination	260	254	33	130 g	10 pcs	100 pcs
100-012-794	XL-JS360TT	Stainless Steel (SUS316)	Mirror and Satin Combination	358	352	36	173 g	10 pcs	100 pcs