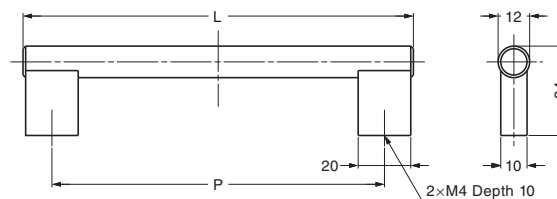


## STAINLESS STEEL HANDLE

STAINLESS 304 STEEL

I1020



Item Code	Item Name	Material	Finish	L	P	Weight	Box
100-012-961	I1020128	Stainless Steel (SUS304)	Satin	150	128	159 g	25 pcs
100-012-962	I1020160	Stainless Steel (SUS304)	Satin	182	160	85 g	25 pcs
100-012-963	I1020192	Stainless Steel (SUS304)	Satin	214	192	93 g	25 pcs
100-012-964	I1020320	Stainless Steel (SUS304)	Satin	342	320	128 g	25 pcs
100-012-965	I1020492	Stainless Steel (SUS304)	Satin	514	492	175 g	25 pcs

Limited stock available. Please contact your vender.

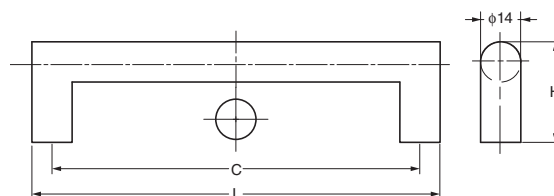
HANDLES, PULLS & KNOBS

## STAINLESS STEEL HANDLE

STAINLESS 304 STEEL

STAINLESS

DIH



Item Code	Old Item Code	Item Name	L	C	H	Weight	Box	Carton
-	-	DIH-096	110	96	35	57 g	25 pcs	250 pcs
100-035-555	100-023-511	DIH-128	142	128		66 g		
-	-	DIH-192	206	192		83 g		
-	-	DIH-342	356	342		123 g		
-	-	DIH-492	506	492		163 g		
-	-	DIH-592	606	592		189 g		

Material	Finish
304 Stainless Steel	Satin

Limited stock available. Please contact your vender.

STAINLESS STEEL HANDLE

## STAINLESS STEEL HANDLE

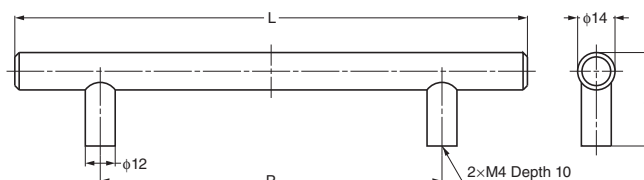
STAINLESS 304 STEEL

I1014



### Recommended Screw

Truss head screw M4x(Door thickness+5 - 10)



Item Code	Item Name	Material	Finish	L	P	Weight	Box
100-012-629	I1014128	Stainless Steel (SUS304)	Satin	192	128	113 g	25 pcs
100-012-628	I1014192	Stainless Steel (SUS304)	Satin	256	192	136 g	25 pcs
100-012-627	I1014342	Stainless Steel (SUS304)	Satin	406	342	187 g	25 pcs
100-012-626	I1014492	Stainless Steel (SUS304)	Satin	556	492	216 g	25 pcs

Limited stock available. Please contact your vender.