

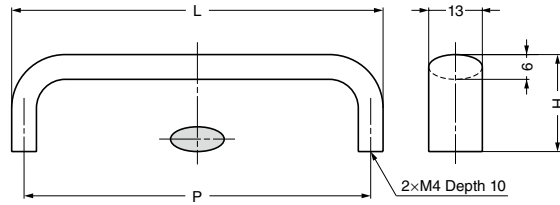
## STAINLESS STEEL HANDLE



DL



**Parts Included**  
Truss head screw M4x28



Item Code	Item Name	Material	Finish	L	H	P	Weight	Box	Carton
100-011-102	DL- 70S	Stainless Steel (SUS303)	Satin	70	23	64	50 g	20 pcs	200 pcs
100-011-101	DL- 70M	Stainless Steel (SUS303)	Mirror	70	23	64	50 g	20 pcs	200 pcs
100-011-104	DL- 90S	Stainless Steel (SUS303)	Satin	90	23.5	84	60 g	20 pcs	200 pcs
100-011-103	DL- 90M	Stainless Steel (SUS303)	Mirror	90	23.5	84	60 g	20 pcs	200 pcs
100-011-106	DL-110S	Stainless Steel (SUS303)	Satin	110	24	104	70 g	15 pcs	150 pcs
100-011-105	DL-110M	Stainless Steel (SUS303)	Mirror	110	24	104	70 g	15 pcs	150 pcs
100-011-108	DL-130S	Stainless Steel (SUS303)	Satin	130	24.5	124	80 g	15 pcs	150 pcs
100-011-107	DL-130M	Stainless Steel (SUS303)	Mirror	130	24.5	124	80 g	15 pcs	150 pcs
100-011-110	DL-150S	Stainless Steel (SUS303)	Satin	150	25	144	95 g	15 pcs	150 pcs
100-011-109	DL-150M	Stainless Steel (SUS303)	Mirror	150	25	144	95 g	15 pcs	150 pcs

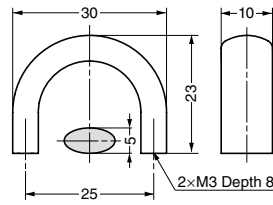
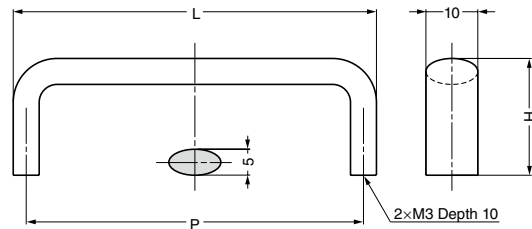
## STAINLESS STEEL HANDLE



DS



**Parts Included**  
Truss head screw M3x28



Item Code	Item Name	Material	Finish	L	H	P	Weight	Box	Carton
100-011-112	DS-30S	Stainless Steel (SUS303)	Satin	As Above	As Above	As Above	20 g	40 pcs	400 pcs
100-011-111	DS-30M	Stainless Steel (SUS303)	Mirror				20 g	40 pcs	400 pcs
100-011-114	DS-50S	Stainless Steel (SUS303)	Satin	50	22	45	25 g	30 pcs	300 pcs
100-011-113	DS-50M	Stainless Steel (SUS303)	Mirror	50	22	45	25 g	30 pcs	300 pcs
100-011-116	DS-70S	Stainless Steel (SUS303)	Satin	70	22.5	65	32 g	30 pcs	300 pcs
100-011-115	DS-70M	Stainless Steel (SUS303)	Mirror	70	22.5	65	32 g	30 pcs	300 pcs
100-011-118	DS-90S	Stainless Steel (SUS303)	Satin	90	23	85	39 g	20 pcs	200 pcs
100-011-117	DS-90M	Stainless Steel (SUS303)	Mirror	90	23	85	39 g	20 pcs	200 pcs