

STAINLESS STEEL HANDLE

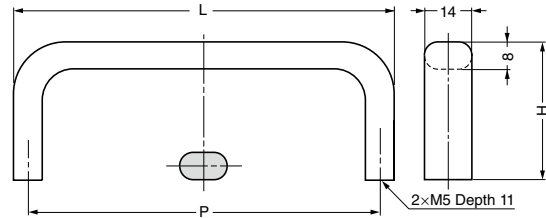

ECH
**HANDLES,
PULLS & KNOBS**


Satin finish

Mirror finish

Parts Included

Truss head screw M5x28



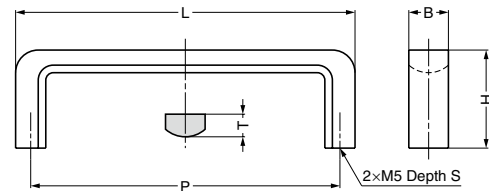
Item Code	Item Name	Material	Finish	L	H	P	Weight	Box	Carton
100-017-249	ECH- 75S	Stainless Steel (SUS303)	Satin	83	40	75	110 g	10 pcs	100 pcs
100-017-241	ECH- 75M	Stainless Steel (SUS303)	Mirror	83	40	75	110 g	10 pcs	100 pcs
100-017-252	ECH-100S	Stainless Steel (SUS303)	Satin	108	40	100	135 g	15 pcs	150 pcs
100-017-242	ECH-100M	Stainless Steel (SUS303)	Mirror	108	40	100	135 g	15 pcs	150 pcs
100-017-251	ECH-125S	Stainless Steel (SUS303)	Satin	133	40	125	153 g	10 pcs	100 pcs
100-017-243	ECH-125M	Stainless Steel (SUS303)	Mirror	133	40	125	153 g	10 pcs	100 pcs
100-017-244	ECH-150M	Stainless Steel (SUS303)	Mirror	158	50	150	190 g	7 pcs	70 pcs
100-017-245	ECH-200M	Stainless Steel (SUS303)	Mirror	208	50	200	244 g	10 pcs	100 pcs
100-017-246	ECH-250M	Stainless Steel (SUS303)	Mirror	258	50	250	280 g	5 pcs	50 pcs
100-017-247	ECH-300M	Stainless Steel (SUS303)	Mirror	308	50	300	306 g	5 pcs	50 pcs

STAINLESS STEEL HANDLE


FB
STAINLESS STEEL HANDLE

Parts Included

Pan-head screw M5x25



Item Code	Item Name	Material	Finish	L	H	B	T	P	S	Weight	Box	Carton
100-010-074	FB- 90	Stainless Steel (SCS13)	Mirror	90	26	10.5	6	82	10	45 g	35 pcs	280 pcs
100-010-075	FB-110	Stainless Steel (SCS13)	Mirror	110	28	12.5	7	102	12	100 g	25 pcs	200 pcs
100-010-076	FB-130	Stainless Steel (SCS13)	Mirror	130	32	14.5	8	120	14	110 g	20 pcs	160 pcs

*SCS13 is equivalent of SUS304.