

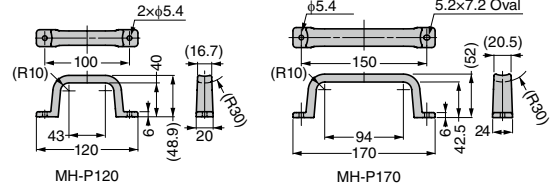
HANDLE MH-P SEMI Compliance



- Clear body suitable for acrylic, etc.
- Allows for easy gripping with glove on (compliant with SEMI standard, SEMI S8-0308).
- Made from weather-proof, chemical-resistance, lead-free PVC.

[Recommended Screws]

- M5 screw



LARGE HANDLES

HANDLES (FRONT SCREW MOUNT)

HANDLES (BACK SCREW MOUNT)

RECESSED PULLS

PULLS & KNOBS

LATCH HANDLES

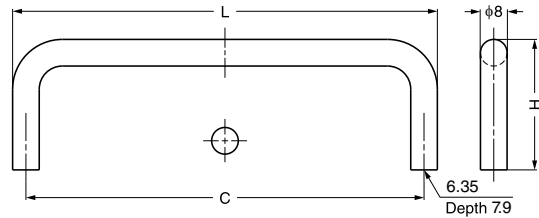
RHS	CAD	Item Code	Item Name	Material	Colour	Load capacity N	Load capacity kgf	Weight (g)	Box (pcs)	Carton (pcs)
		100-021-823	MH-P120	PVC	Clear	200	20	34	64	-
		100-019-999	MH-P170			262	27	56	48	-

WIRE PULL SWP

NSF SUS316



- Ideal for harsh and high corrosion environments.



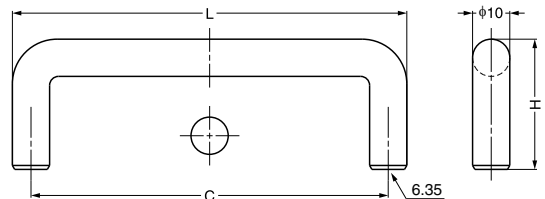
RHS	CAD	Item Code	Item Name	L	C	H	Material	Finish	Weight (g)	Box (pcs)	Carton (pcs)
-	-	100-023-434	SWP-630/S	84.2	76.2	34	Stainless Steel (SUS316)	Satin	71	20	200
-	-	100-023-435	SWP-635/S	96.9	88.9	34			78	20	200
-	-	100-023-436	SWP-640/S	109.6	101.6	34			85	20	200
-	-	100-023-437	SWP-696/S	104	96	34			91	20	200

WIRE PULL SWF

NSF SUS316



- Ideal for harsh and high corrosion environments.



RHS	CAD	Item Code	Item Name	L	C	H	Material	Finish	Weight (g)	Box (pcs)	Carton (pcs)
-	-	100-023-438	SWF-640	111	101.5	35	Stainless Steel (SUS316)	Satin	90	20	200
	-	100-023-439	SWF-650	136.5	127	35			110	20	200
	-	100-023-440	SWF-660	162	152.5	35			130	20	200
-	-	100-023-441	SWF-690	238	228.5	35			200	20	200
	-	100-023-442	SWF-6120	314.5	305	35			270	20	200