

## STAINLESS STEEL HANDLE



LF-12

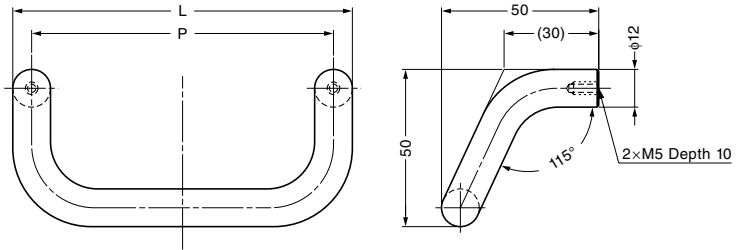


### Features

Grip portion has inclination, making it very easy to grab the handle.

### Parts Included

Truss head screw M5x30



Item Code	Item Name	Material	Finish	L	P	Weight	Box
100-010-520	LF-12- 96	Stainless Steel (SUS304)	Satin	108	96	182 g	10 pcs
100-010-521	LF-12-128	Stainless Steel (SUS304)	Satin	140	128	211 g	10 pcs
100-010-522	LF-12-160	Stainless Steel (SUS304)	Satin	172	160	236 g	10 pcs

## STAINLESS STEEL HANDLE

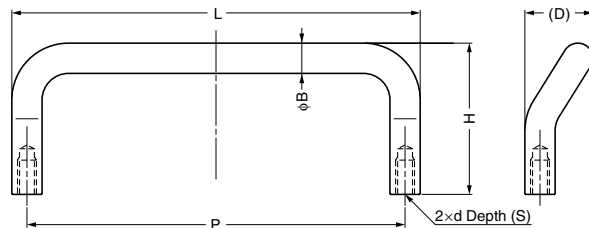


H-75-C



### Features

Grip portion has inclination, making it very easy to grab the handle.



Item Code	Item Name	Material	Finish	L	H	D	B	P	d	S	Weight	Box	Carton
100-010-605	H-75-C- 66	Stainless Steel (SUS304)	Polished	66	30	16	6	60	M4	7	23 g	100 pcs	400 pcs
100-010-606	H-75-C- 86	Stainless Steel (SUS304)	Polished	86	31.5	16	6	80	M4	7	28 g	100 pcs	400 pcs
100-010-607	H-75-C-108	Stainless Steel (SUS304)	Polished	108	32	18	8	100	M5	10	54 g	50 pcs	200 pcs
100-010-608	H-75-C-128	Stainless Steel (SUS304)	Polished	128	40	18	8	120	M5	10	70 g	50 pcs	200 pcs

## BRACKET FOR STAINLESS STEEL HANDLE

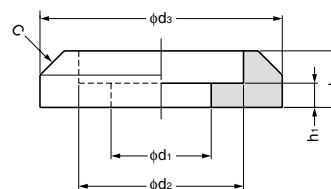


H-42-Z



### Features

- Bracket for stainless steel handle
- Suitable handle diameter sizes and screws are listed below



Item Code	Item Name	Material	Finish	h <sub>1</sub>	h <sub>2</sub>	d <sub>1</sub>	d <sub>2</sub>	d <sub>3</sub>	c	Handle Diameter	Screw Size	1 Set	Weight	Box	Carton
100-010-570	H-42-Z- 6	Stainless Steel (SUS304)	Polished	1.5	2.5	4.5	6.2	10	1	φ 6	M4	2 pcs	2.1 g	200 sets	2,000 sets
100-010-571	H-42-Z- 7	Stainless Steel (SUS304)	Polished	1	3	5.2	7.2	10	1	φ 7	M5	2 pcs	2.0 g	200 sets	2,000 sets
100-010-572	H-42-Z- 9	Stainless Steel (SUS304)	Polished	1	3	5.2	9.2	13	1	φ 9	M5	2 pcs	3.5 g	200 sets	2,000 sets
100-010-573	H-42-Z-10	Stainless Steel (SUS304)	Polished	1.5	3.5	6.2	10.2	15	1.5	φ10	M6	2 pcs	6.0 g	200 sets	2,000 sets
100-010-574	H-42-Z-12	Stainless Steel (SUS304)	Polished	1.5	4.5	8.2	12.2	18	1.5	φ12	M8	2 pcs	11.8 g	200 sets	2,000 sets