

ADJUSTABLE TORQUE HINGE HG-TASJ40

SUS

Passed 40,000 open/
close private cycle test

Free stop



- Torque adjustable from 0 to 4 N · m.
- Stainless steel construction suitable for corrosive environments.

[Specifications]

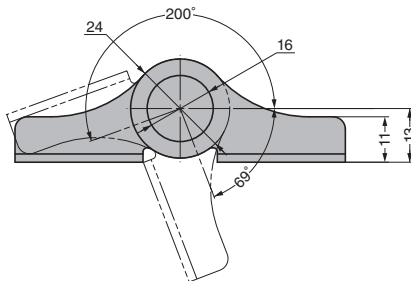
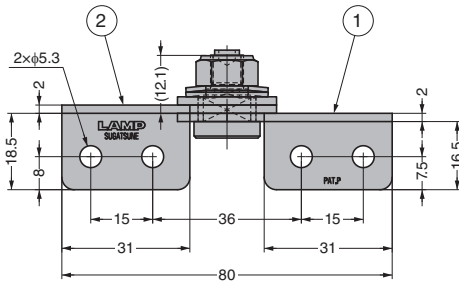
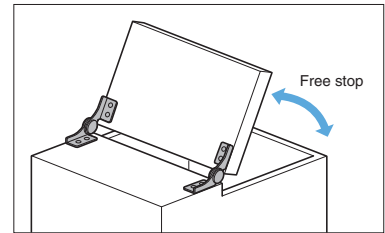
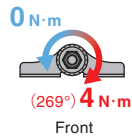
- Operating temperature: 0°C - 40°C

[Remarks]

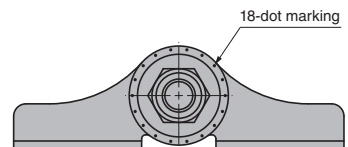
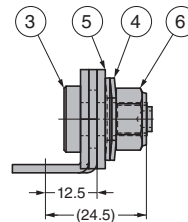
- Be sure to read the "Cautions" 1.
- When installing, ensure that both hinge shafts are levelled and aligned.
- Use a spanner (nominal size 13) for torque adjustment.
- Do not forcibly remove the torque adjustment nut.
- The factory setting of torque is 4.0 N · m. Adjust if necessary.

S Selection Tool
Sasuga-kun
 Applicable Products
 Used for Product
 Selection &
 Simulation.
 Available on Web!

[Application Example]

Adjustable with
a hex key 13.

Left-handed type shown. Right-handed type is symmetrical.



No.	Part Name	Material	Finish
①	Body	Stainless Steel (SUS304)	Barrel Polished
②	Base		
③	Shaft	Stainless Steel (SUS303)	-
④	Spring Washer	Stainless Steel (SUS304)	Barrel Polished
⑤	Plate		
⑥	Lock Nut	Stainless Steel	-

RoHS	CAD	Item Code	Item Name	Type	Torque N · m/pc	Torque kgf · cm/pc	Weight (g)	Box (pcs)	Carton (pcs)
		170-037-306	HG-TASJ40R	Right	0~4.0	0~40.8	64	20	160
		170-037-307	HG-TASJ40L	Left			64	20	160

Refer to 1 : P.15

TORQUE
HINGESDAMPER
HINGESLIFT
ASSIST
HINGESDETENT
HINGESCONCEALED
HINGESBUTT
HINGESPIANO
HINGESSTEP
HINGESLIFT-
OFF
HINGESPIVOT
HINGESSPRING
HINGESCLEAN
ROOM
HINGESHINGES FOR
ALUMINIUM
FRAMEDROP
HINGESGLASS
DOOR
HINGESSPECIAL
HINGES