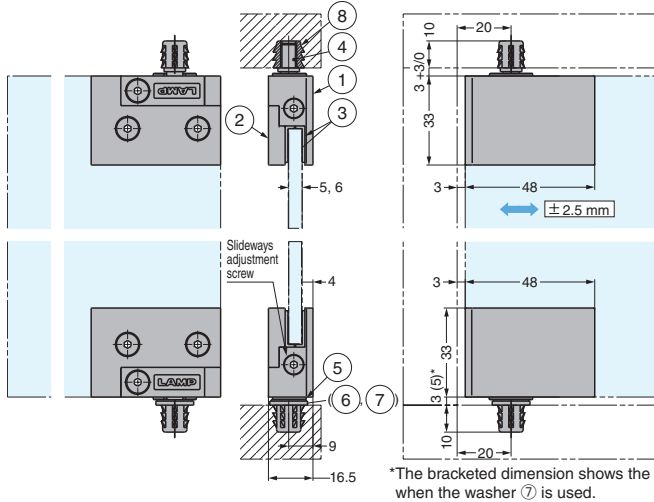


GLASS HINGE (INSET)



GS-GH5

HINGES



Features

- For inset glass doors
- Can be used together with glass bracket GS-GB5 and glass door lock GS-GL5 for a total design of your showcase.
- Temporary holding feature allows the door to be installed easily by one person.
- Sideways adjustment (± 2.5 mm) possible after installation of the door.
- The gap below the door is adjustable from 3 mm to 5 mm with washers (⑥, ⑦).

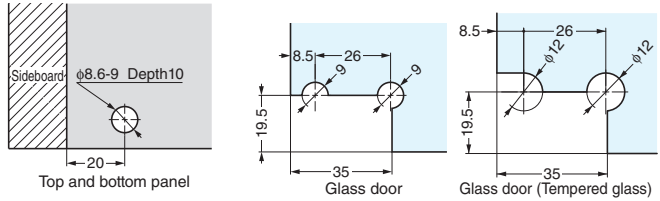
Remarks

- Please refer to glass weight as the main reference when installing glass door.
- Please use different gasket supplied with item for 5 mm thickness glass door.
- Film for glass door is recommended for safe usage.
- Please prepare a door stop separately.

Parts included

- Gaskets
- Spanner Hex.2.5

Installation Drawings



No.	Part Name	Material	Finish/Colour		
			CR	GP	BL
①	Body	Zinc Alloy (ZDC)	Chrome	Gold (24K) Plated	Black
②	Cover Plate	Zinc Alloy (ZDC)	Chrome	Gold (24K) Plated	Black
③	Gasket	Chloroprene Rubber (CR)	Black		
④	Axis	Stainless Steel	Plain		
⑤	Plastic Washer	Polyamide (PA)	Black		
⑥	Washer (t:1.5)	Stainless Steel (SUS304)	Plain		
⑦	Washer (t:3.5)	Brass	Nickel		
⑧	Insert	Zinc Alloy (ZDC)	-		

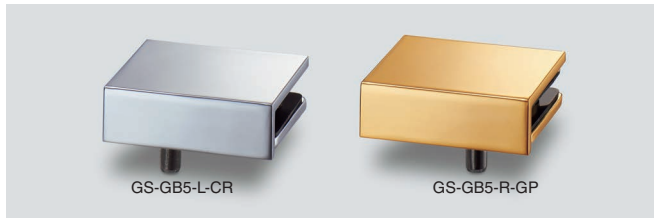
CAD	Item CD	Item Name	Finish/Colour	Door Width	Door Height	Glass Thickness	Door Weight N/set	Door Weight kgf/set	Box (sets)	Carton (sets)
2D/3D	170-037-123	GS-GH5-CR	Chrome	Max. 600 mm	Max. 900 mm	5, 6 mm	78	8	1	24
2D/3D	170-037-124	GS-GH5-GP	Gold (24K) Plated							
2D/3D	170-042-197	GS-GH5-BL	Black							

Sold in set (2 pcs).

GLASS BRACKET (INSET) / GLASS BRACKET



GS-GB5



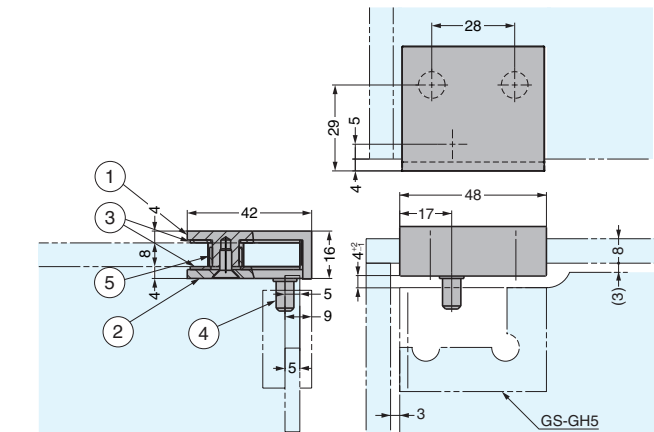
Features

- For use with glass hinge GS-GH5 for installation on cabinets with a glass top.
- Can be used together with glass hinge GS-GH5 and lock GS-GL5 for a complete unified design for your showcase.

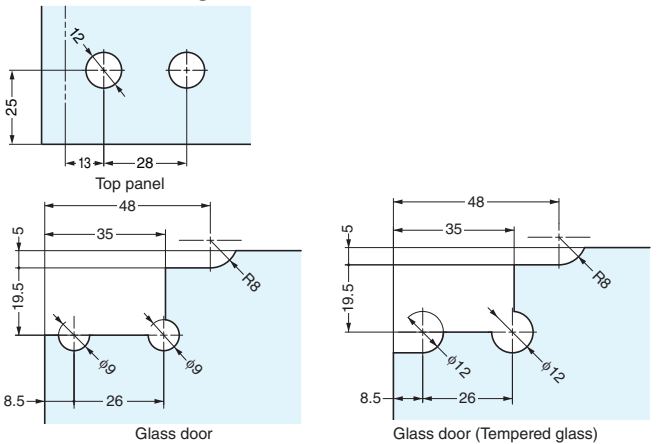
Remarks

- Film for glass door is recommended for safe usage.
- Please prepare a door stop separately.

Installation Drawings



Drawing shows left side installation.



CAD	Item Code	Item Name	Type	Finish	Glass Thickness	Box (pcs)	Carton (pcs)
-	170-037-125	GS-GB5-R-CR	Right Side	Chrome	8 mm	1	24
-	170-037-126	GS-GB5-L-CR	Left Side			1	24
-	170-037-127	GS-GB5-R-GP	Right Side	Gold (24K) Plated		1	24
-	170-037-128	GS-GB5-L-GP	Left Side			1	24
-	170-042-198	GS-GB5-R-BL	Right Side	Black		1	24
-	170-042-207	GS-GB5-L-BL	Left Side			1	24

No.	Part Name	Material	Finish/Colour		
			CR	GP	BL
①	Body	Zinc Alloy (ZDC)	Chrome	Gold (24K) Plated	Black
②	Plate	Stainless Steel (SUS430)	Chrome	Gold (24K) Plated	Black
③	Washer	Chloroprene Rubber (CR)	Black		
④	Axis	Stainless Steel	Plain		
⑤	Tube	Polyvinyl Chloride (PVC)	Clear		



GLASS HINGE (INSET) / GLASS BRACKET