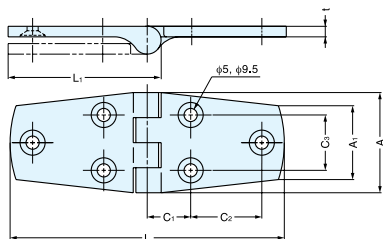


BUTT HINGE



28000, 28500



- 316 Stainless Steel construction ideal for exposed application.
- Door weight: Max. 4kg/pair (8.8lbs/pair)
- Door size: Max. W450 x H700 x t21 mm (W17-3/4" x H27-9/16" x t13/16")

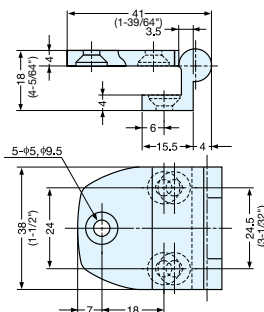
Material	Finish
316 Stainless Steel	Polished

Item No.	L	L ₁	C ₁	C ₂	C ₃	A	A ₁	t	Weight (g)	Box (pcs)	Carton (pcs)
28500	74 (2-29/32")	42 (1-21/32")	13.0	17	20	38	28	4	85	20	100
28000	104 (4-3/32")	57 (2-1/4")	16.5	27	21				115		

BUTT HINGE



28100



- 316 Stainless Steel construction ideal for exposed application.
- Door weight: Max. 4kg/pair (8.8lbs/pair)
- Door size: Max. W450 x H700 x t21 mm (W17-3/4" x H27-9/16" x t13/16")

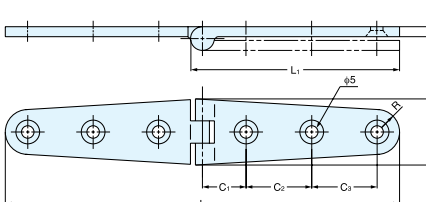
Material	Finish
316 Stainless Steel	Polished

Item No.	Weight (g)	Box (pcs)	Carton (pcs)
28100	78.5	20	100

LEAF HINGE



50704, 50706



- 316 Stainless Steel construction ideal for exposed application.
- Door weight: Max. 2.6kg/pair (5.7lbs/pair)

Material	Finish
316 Stainless Steel	Polished

Item No.	L	L ₁	C ₁	C ₂	C ₃	A	R	t	Holes	Weight (g)	Box (pcs)	Carton (pcs)
50704	105 (4-9/64")	57 (2-1/4")	17.5	25	-	26.5	9	4	4	75	20	100
50706	158 (6-7/32")	84 (3-5/16")	19.5		25	26.5			6	115		