

BUTT HINGE (W/ SPRING)

L=R

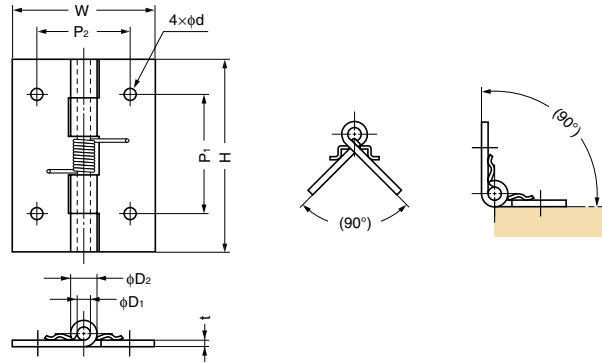
STAINLESS 304 STEEL

HG-SH



Features

- Made entirely out of stainless steel, high corrosion resistance
- Designed to exert constant closing force on flap doors and doors



Item Code	Item Name	Material	Finish	H	W	P ₁	P ₂	D ₁	D ₂	d	t	Torque Moment	Door Weight	Weight	Box	Carton	
170-098-515	HG-SH-20C	Stainless Steel (SUS304)	Mirror	20	14	-	-	1	2.2	-	0.5	9.7 cN·m	0.99 kgf·cm	Max. 1 kg/2 pcs	1.5 g	800 pcs	3200 pcs
170-098-516	HG-SH-25C	Stainless Steel (SUS304)	Mirror	25	32	14	20	3	5.8	3.2	1.2	6.5 cN·m	0.66 kgf·cm	Max. 2 kg/2 pcs	10 g	300 pcs	1200 pcs
170-098-517	HG-SH-38C	Stainless Steel (SUS304)	Mirror	38	32	26	20	3	6.5	3.2	1.5	14.7 cN·m	1.5 kgf·cm	Max. 4 kg/2 pcs	20 g	200 pcs	800 pcs
170-098-522	HG-SH-51C	Stainless Steel (SUS304)	Mirror	51	38	32	25	3	6.5	3.2	1.5	13.5 cN·m	1.38 kgf·cm	Max. 6 kg/2 pcs	30 g	130 pcs	520 pcs

HIGH DURABILITY SPRING HINGE

L=R

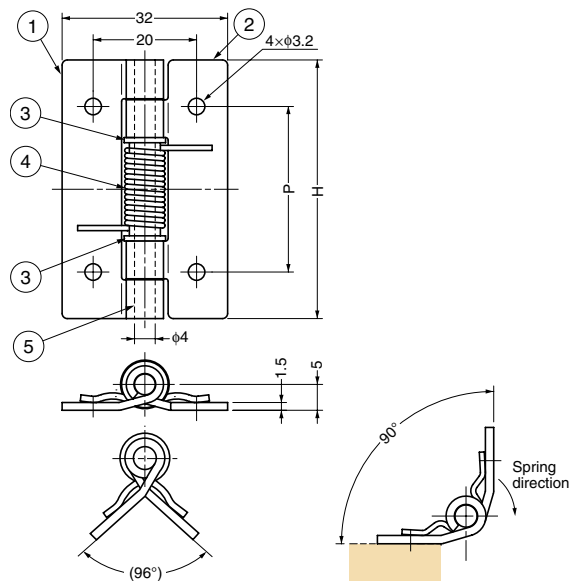
STAINLESS 304 STEEL

HG-SHL



Features

- Made entirely out of stainless steel, high corrosion resistance
- Passed 1,000,000 open/close cycles in a private test
- Designed to exert constant closing force on flap doors and doors



No.	Part Name	Material	Finish
①	Body 1	Stainless Steel (SUS304)	Mirror
②	Body 2	Stainless Steel (SUS304)	Mirror
③	Collar	Stainless Steel (SUS303)	-
④	Spring	Stainless Steel (SUS304)	-
⑤	Shaft	Stainless Steel (SUS303)	-

Item Code	Item Name	H	P	Torque Moment	Weight	Box	Carton
170-024-384	HG-SHL32	32	18	4.7 cN·m	0.48 kgf·cm	20 g	500 pcs
170-024-385	HG-SHL50	50	32	8.9 cN·m	0.91 kgf·cm	30 g	500 pcs
170-024-386	HG-SHL60	60	40	14.0 cN·m	1.43 kgf·cm	38 g	500 pcs