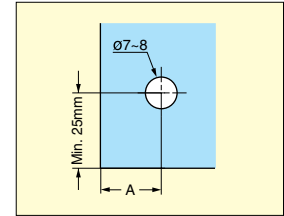
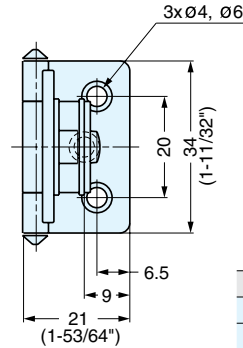
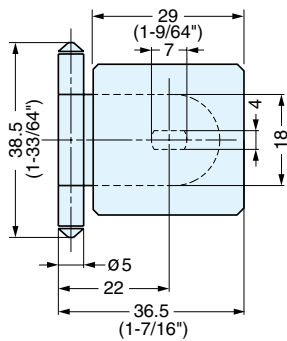
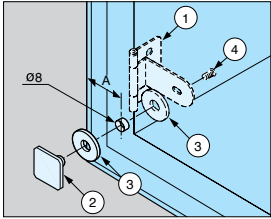
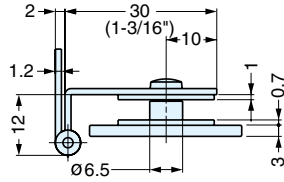


# INSET GLASS DOOR HINGE



# GH-34-0CR-K



Cut Out Dimension

- Hinge for glass/acrylic doors.
- Door thickness: 4-6 mm.
- Door size: Max. W450 x H700 (W17-3/4" x H27-9/16")
- Door weight: Max. 4 kg/pair (8.8 lbs/pair)
- Rounded plate GH-34/0/CR-P is available.

Glass Thickness (mm)	A (mm)
4 (5/32")	19
5 (3/16")	18
6 (15/64")	17

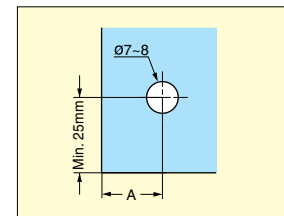
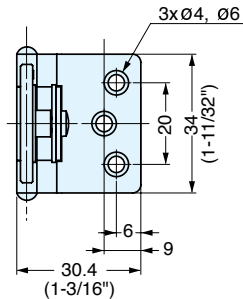
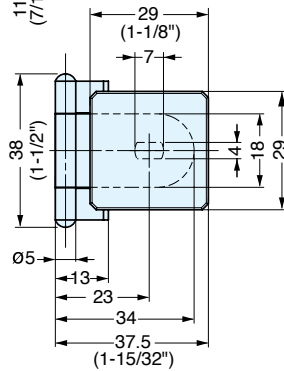
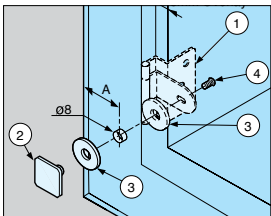
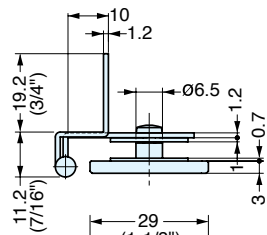
No.	Part Name	Material	Finish/Color
①	Body	Steel	Chrome
②	Plate	Zinc Alloy	
③	Washer	PVC	Clear
④	Screw	Steel	Nickel

Item No.	Weight (g)	Box (pcs)	Carton (pcs)
GH-34-0CR-K	34	150	900

# HALF OVERLAY GLASS DOOR HINGE



# GH-34-8CR-K



Cut Out Dimension

- Half overlay.
- Hinge for glass/acrylic doors.
- Door thickness: 4-6 mm.
- Door size: Max. W450 x H700 (W17-3/4" x H27-9/16")
- Door weight: Max. 4 kg/pair (8.8 lbs/pair)
- Rounded plate GH-34/8/CR is available.

Glass Thickness (mm)	A (mm)	Overlay (mm)
4 (5/32")	19	8
5 (3/16")	18	7
6 (15/64")	17	6

No.	Part Name	Material	Finish/Color
①	Body	Steel	Chrome
②	Plate	Zinc Alloy	
③	Washer	PVC	Clear
④	Screw	Steel	Nickel

Item No.	Weight (g)	Box (pcs)	Carton (pcs)
GH-34-8CR-K	37	50	500