

# INSET GLASS DOOR HINGE



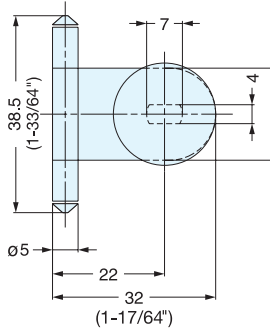
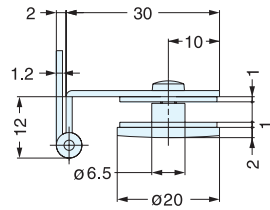
## GH-34/0



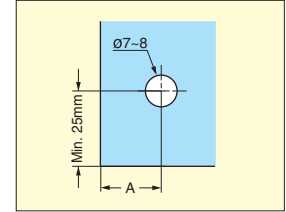
GH-34/0/CR



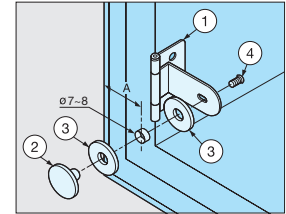
GH-34/0/BL



- Hinge for glass/acrylic doors.
- Door thickness: 4-6 mm
- Door size: Max. W450 x H700 (W17-3/4" x H27-9/16")
- Door weight: Max. 4 kg/pair (8.8 lbs/pair)



Cut Out Dimension



Glass Thickness	A
4 (5/32")	19
5 (3/16")	18
6 (15/64")	17

Item No.	Weight (g)	Box (pcs)	Carton (pcs)
GH-34/0/CR-P	23.5	100	600
GH-34/0/BL-P		150	900

No.	Part Name	Material	Finish
①	Body	Steel	Chrome/Black
②	Plate	Brass	Chrome/Black
③	Washer	PVC	Clear
④	Screw	Steel	Nickel/Black

# HALF OVERLAY GLASS DOOR HINGE



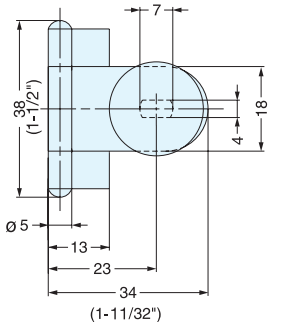
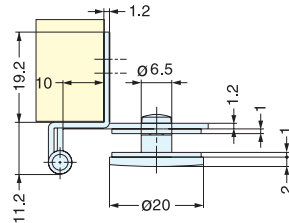
## GH-34/8



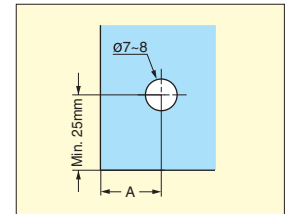
GH-34/8/CR



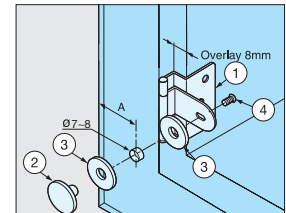
GH-34/8/BL



- Half overlay.
- Hinge for glass/acrylic doors.
- Door thickness: 4-6 mm
- Door size: Max. W450 x H700 (W17-3/4" x H27-9/16")
- Door weight: Max. 4 kg/pair (8.8 lbs/pair)



Cut Out Dimension



Glass Thickness	A	Overlay
4 (5/32")	19	8
5 (3/16")	18	7
6 (15/64")	17	6

Item No.	Weight (g)	Box (pcs)	Carton (pcs)
GH-34/8/CR-P	25	50	500
GH-34/8/BL-P			

No.	Part Name	Material	Finish
①	Body	Steel	Chrome/Black
②	Plate	Brass	Chrome/Black
③	Washer	PVC	Clear
④	Screw	Steel	Nickel/Black