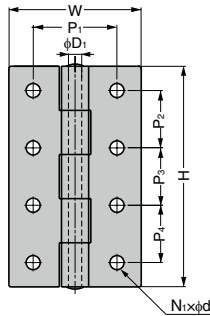


# BUTT HINGE LSA, LSB

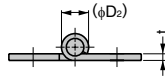
SUS



● All parts made of polished stainless steel. Made to order available.

**[Remarks]**

● Load capacity is the value when using two hinges. For calculation conditions, please refer to INDEX 1.



RoHS	CAD	Item Code	Item Name	Holes	Material	Finish	H	W	P <sub>1</sub>	P <sub>2</sub>	P <sub>3</sub>	P <sub>4</sub>	t	d	D <sub>1</sub>	D <sub>2</sub>	N <sub>1</sub>	Load Capacity N / 2 pcs	Load Capacity kgf / 2 pcs	Weight (g)	Box (pcs)	Carton (pcs)				
G	3D	170-090-730	LSA-40	Without screw holes	Stainless Steel (SUS304)	Mirror	40	35					1.5		3	6.3		69	7	25	100	400				
		170-090-731	LSA-50				50														88	9	30	100	400	
		170-090-718	LSA-65				65															157	16	66	50	200
		170-090-719	LSA-75				75	50	-	-							2		4.5	8.8		186	19	76	40	160
		170-090-734	LSA-90				90																333	34	190	10
170-090-735	LSA-100	100																		363	37	200	10	60		
G	3D	170-090-724	LSB-40	With screw holes			Stainless Steel (SUS304)	Mirror	40	35	22	26			1.5	3.2	3	6.3	4	69	7	25	100	400		
		170-090-725	LSB-50						50	35	22	34										88	9	30	100	400
		170-090-716	LSB-65						65	50	30	23	23						2	4.3			157	16	64	50
170-090-717	LSB-75	75	50						30	27	27											186	19	74	40	160
170-090-728	LSB-90	90	60		38	35			35												333	34	180	10	80	
170-090-729	LSB-100	100	60		38	26			26	26						3	6.4	6	12.3	8	363	37	195	10	60	

Refer to 1 : P.15

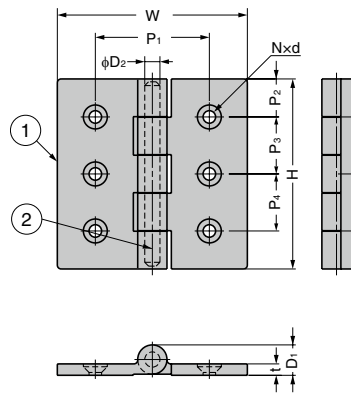
# BUTT HINGE LSF

NSF SUS316



**[Remarks]**

● Load capacity is the value when using two hinges. For calculation conditions, please refer to INDEX 1.



No.	Part Name	Material	Finish
①	Body	Stainless Steel (SCS14)	Mirror
②	Shaft	Stainless Steel (SUS316)	-

※SCS14 is equivalent of SUS316.

RoHS	CAD	Item Code	Item Name	H	W	P <sub>1</sub>	P <sub>2</sub>	P <sub>3</sub>	P <sub>4</sub>	t	D <sub>1</sub>	D <sub>2</sub>	Knuckles	N	d	Load Capacity N / 2 pcs	Load Capacity kgf / 2 pcs	Weight (g)	Box (pcs)	Carton (pcs)
G	3D	170-090-720	LSF-50	50	50	35	15	20		5	14	6	3	4	Counterbore for M4	275	28	110	20	100
		170-090-721	LSF-65	65	65	40		35	-						Counterbore for M5	353	36	190	20	80
G	3D	170-090-722	LSF-75	75	75	50	17.5	40		6	16	8	5	6	Counterbore for M6	500	51	305	10	50
G	3D	170-090-723	LSF-100	100	100	60	20	30	30			667				68	500	10	30	

Refer to 1 : P.15