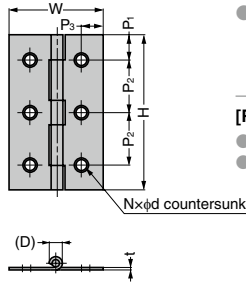
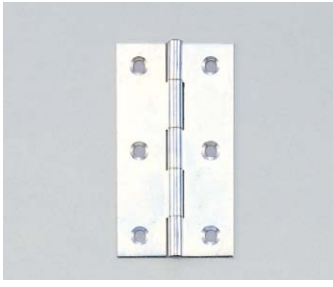


BUTT HINGE F-A



- No hole type or different finish (bronze plating, melamine enamel finish, plain) are available on order. For further details, please contact local representatives.

[Remarks]

- Product movement varies. Please check with actual item.
- Load capacity is the value when using two hinges. For calculation conditions, please refer to INDEX 1.

RoHS	CAD	Item Code	Item Name	Material	Finish	H	W	P ₁	P ₂	P ₃	t	D	N	d	Load Capacity N/2 pcs	Load Capacity kgf/2 pcs	Weight (g)	Box (pcs)	Carton (pcs)		
✓	3D	170-090-282	F-25A	Steel (SPCC)	Clear Zinc Chromate	25	20	3.5	18	3.5	0.8	3.8	4	3.4	20	2	4.4	120	4800		
✓	3D	170-090-283	F-32A			32	22	4	24	4							6.1	120	4800		
✓	3D	170-090-284	F-38A			38	26	5	28	4.5		8.9	60	3600							
✓	3D	170-090-285	F-51A			51	30	6	39	5.5		13.2	60	2400							
✓	3D	170-090-287	F-64A			64	33	6.5	25.5	6.5	19.4	24	1200								
✓	3D	170-090-286	F-76A			76	41	8	30	8	32.5	24	720								

Refer to 1 : P.15

TORQUE HINGES

DAMPER HINGES

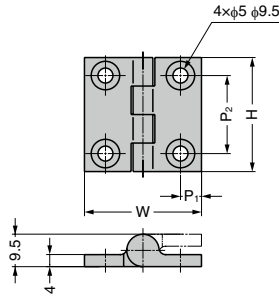
LIFT ASSIST HINGES

DETENT HINGES

CONCEALED HINGES

BUTT HINGE 28300, 28400

SUS316



[Remarks]

- Recommended for use in pairs.
- Load capacity is the value when using two hinges. For calculation conditions, please refer to INDEX 1.

PIANO HINGES

STEP HINGES

LIFT-OFF HINGES

PIVOT HINGES

SPRING HINGES

RoHS	CAD	Item Code	Item Name	Material	Finish	H	W	P ₁	P ₂	Door Width	Door Height	Door Thickness	Load Capacity N/2 pcs	Load Capacity kgf/2 pcs	Weight (g)	Box (pcs)	Carton (pcs)
✓	3D	170-096-004	28300	Stainless Steel (SCS14)	Polished	38	39	7	26	Max.	700	21	167	17	55	20	100
✓	3D	170-096-005	28400			50	50	7.5	34	450	700	21	226	23	90	20	-

Refer to 1 : P.15

※SCS14 is equivalent of SUS316.

CLEAN ROOM HINGES

HINGES FOR ALUMINIUM FRAME

DROP HINGES

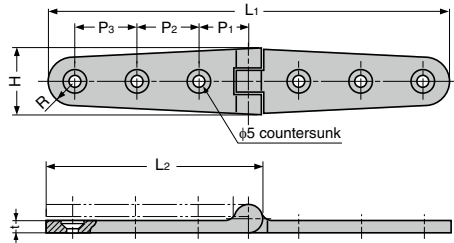
BUTT HINGE 50704, 50706

SUS316



[Remarks]

- Recommended for use in pairs.
- Load capacity is the value when using two hinges. For calculation conditions, please refer to INDEX 1.



RoHS	CAD	Item Code	Item Name	Holes	Material	Finish	L ₁	L ₂	H	R	P ₁	P ₂	P ₃	t	Load Capacity N/2 pcs	Load Capacity kgf/2 pcs	Weight (g)	Box (pcs)	Carton (pcs)
✓	3D	170-096-000	50704	4	Stainless Steel (SCS14)	Polished	105	57	26.5	9	17.5	25	25	4	118	12	75	20	100
✓	3D	170-096-001	50706	6			158	84			19.5						115	20	100

Refer to 1 : P.15

※SCS14 is equivalent of SUS316.

DROP HINGES

GLASS DOOR HINGES

SPECIAL HINGES