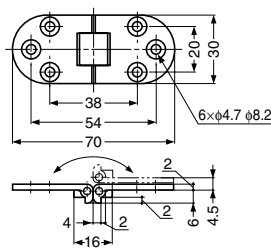
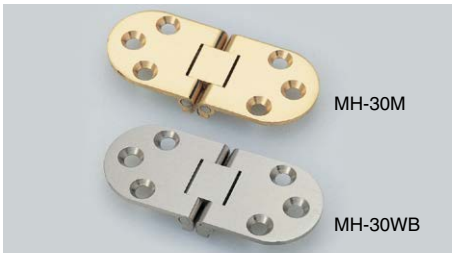


TABLETOP HINGE

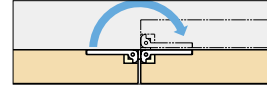
L=R

MH-30



Features

Double pivot hinge allows 180° opening.

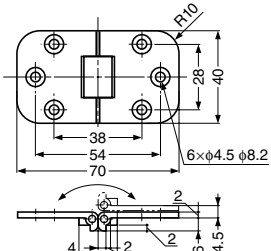


Item Code	Item Name	Material	Finish	Door Width	Door Height	Door Thickness	Door Weight	Weight	Box	Carton
170-090-052	MH-30M	Brass	Polished	Max. 450	Max. 700	Max. 21	Max. 4 kg/2 pcs	45 g	24 pcs	360 pcs
170-090-051	MH-30WB	Brass	Satin Nickel	Max. 450	Max. 700	Max. 21	Max. 4 kg/2 pcs	45 g	24 pcs	360 pcs
170-090-050	MH-30CR	Brass	Chrome	Max. 450	Max. 700	Max. 21	Max. 4 kg/2 pcs	45 g	24 pcs	360 pcs

TABLETOP HINGE

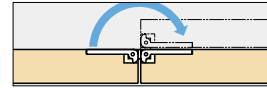
L=R

MH-40



Features

Double pivot hinge allows 180° opening.



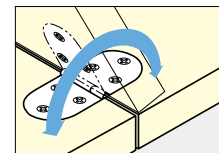
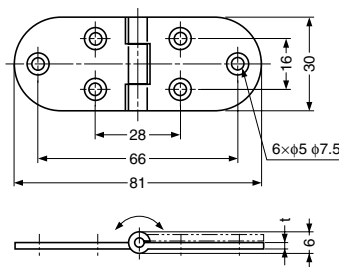
Item Code	Item Name	Material	Finish	Door Width	Door Height	Door Thickness	Door Weight	Weight	Box	Carton
170-090-057	MH-40M	Brass	Polished	Max. 450	Max. 700	Max. 21	Max. 4 kg/2 pcs	64 g	16 pcs	240 pcs
170-090-056	MH-40WB	Brass	Satin Nickel	Max. 450	Max. 700	Max. 21	Max. 4 kg/2 pcs	64 g	16 pcs	240 pcs
170-090-055	MH-40CR	Brass	Chrome	Max. 450	Max. 700	Max. 21	Max. 4 kg/2 pcs	64 g	16 pcs	240 pcs

TABLETOP HINGE

L=R

STAINLESS 304 STEEL

MH-83



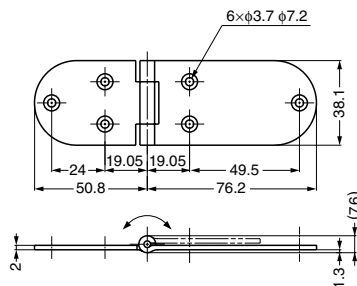
Item Code	Item Name	Material	Finish	t	Door Width	Door Height	Door Thickness	Door Weight	Weight	Box	Carton
170-090-046	MH-83CR	Steel	Chrome	1.6	Max. 450	Max. 700	Max. 21	Max. 4 kg/2 pcs	31 g	100 pcs	1000 pcs
170-090-045	MH-83S	Stainless Steel (SUS304)	Satin	1.5	Max. 450	Max. 700	Max. 21	Max. 4 kg/2 pcs	28 g	100 pcs	1000 pcs

TABLETOP HINGE

L=R

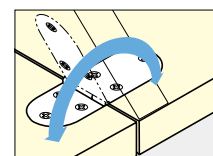
STAINLESS 304 STEEL

MA-5



Recommended Screw

Countersunk head wood screw 3.5



Item Code	Item Name	Material	Finish	Door Width	Door Height	Door Thickness	Door Weight	Weight	Box	Carton
170-918-023	MA-5	Stainless Steel (SUS304)	Mirror	Max. 450	Max. 700	Max. 21	Max. 4 kg/2 pcs	77 g	35 pcs	350 pcs