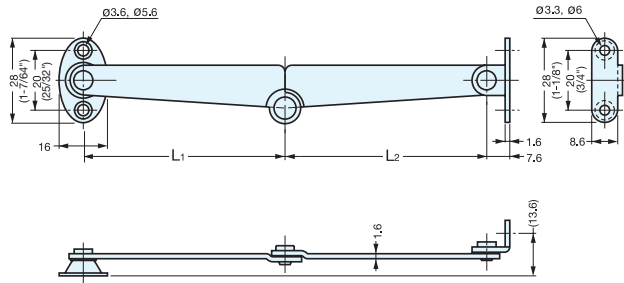
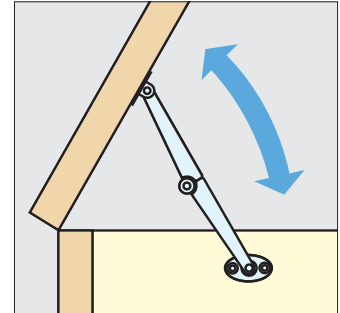
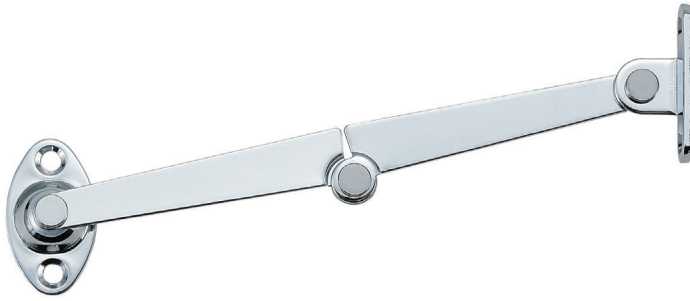


LID STAY



S-6, S-16

- Not load bearing keeps lids from over extending.
- Can be installed individually or in pairs.
- Handed: Specific left and right hand mounting.



Item No.		L ₁	L ₂	Weight (g)	Box (pcs)	Carton (pcs)
Left	Right					
S-6L	S-6R	53 (2-3/32")	53 (2-3/32")	20	100	1000
S-16R	S-16L	67 (2-41/64")	67 (2-41/64")	31		

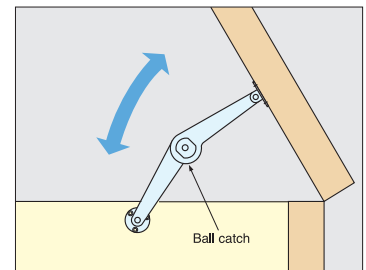
Material	Finish
Steel/Brass/Nylon (washer)	Chrome

LID STAY (W/CATCH)

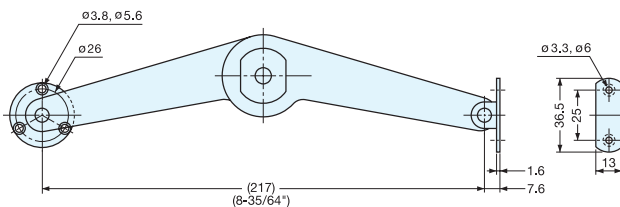
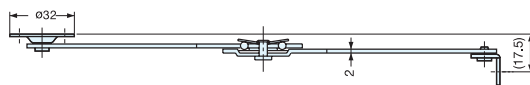


S-20

- Lid stay with ball catch for lightweight doors.
- Catch automatically holds lid in opened position.
- Can be installed individually or in pairs.
- Handed: Specific left and right hand mounting.



(Left)



Item No.		Weight (g)	Box (pcs)	Carton (pcs)
Left	Right			
S-20L	S-20R	125	40	160

Material	Finish
Steel, Brass, Nylon (washer)	Chrome