

# RECESSED PULL 5103

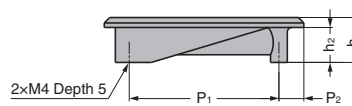
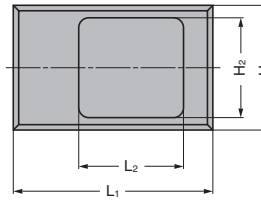


**[Remarks]**

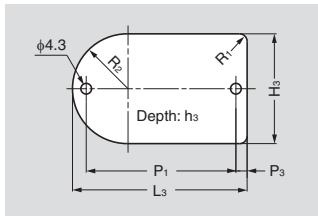
- Bracket for sheet metal not included.

**[Parts Included]**

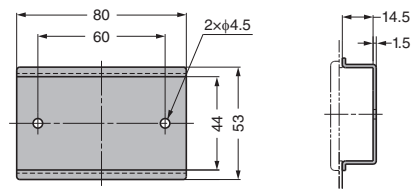
- Truss head screw M4 × 12



**[Cut Out Dimensions]**



**[Bracket for Sheet Metal] Example (for 5103-80)**

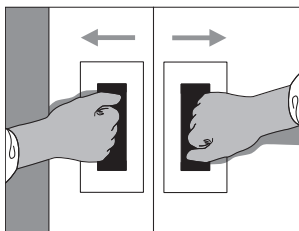
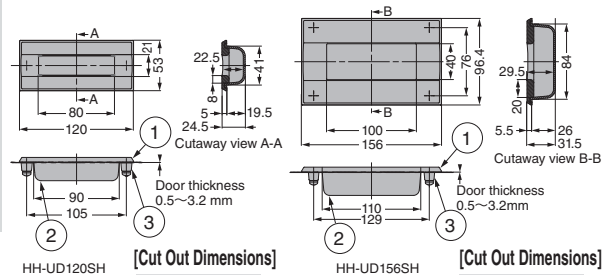


RoHS	CAD	Item Code	Item Name	Material	Finish	L1	L2	H1	H2	h1	h2	P1	P2	L3	H3	P3	R1	R2	h3	Weight (g)	Box (pcs)	Carton (pcs)
✓	3D	100-014-085	5103-55	Zinc Alloy	White Bronze	55	31.5	40	31.5	15.5	12.5	32	16	46	35	10	2	18	12.5	42	40	160
✓	3D	100-014-084	5103-80	(ZDC)	Plating	80	42	50	40	18	14	60	10	70	44	4.5	3	22	14	88	20	80

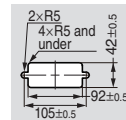
# RECESSED PULL HH-UD



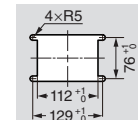
- Grips on both sides allow the door to be moved in either direction.
- Solid grip interior with rounded edges for optimum comfort.
- The HH-UD156 is compliant with the SEMI S8-0915.



**[Cut Out Dimensions]**



**[Cut Out Dimensions]**



No.	Part Name	Material
①	Body	Stainless Steel (SCS13)
②	Cup	ABS and PC
③	Spacer	Stainless Steel (SUS304)

RoHS	CAD	Item Code	Item Name	Finish	Load Capacity N	Load Capacity kgf	Weight (g)	Box (pcs)	Carton (pcs)
✓	3D	100-037-024	HH-UD120SH	Satin	500	51	193	1	40
✓	3D	100-037-025	HH-UD120SM	Mirror				1	40
✓	3D	100-037-026	HH-UD156SH	Satin			502	1	40
✓	3D	100-037-027	HH-UD156SM	Mirror				1	40