

## RECESSED PULL

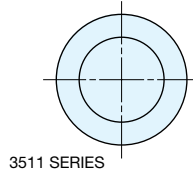
## 3511, 3512 SERIES



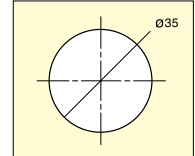
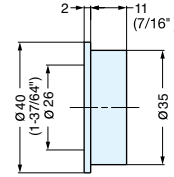
3511038/SN



3511400/CR



3511 SERIES



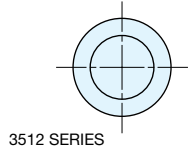
Panel Cut Out Dimensions



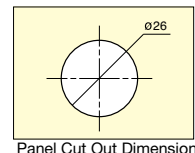
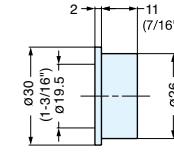
3512038/SN



3512400/CR



3512 SERIES



Panel Cut Out Dimensions

Item No.	Weight (g)	Box (pcs)	Carton (pcs)
3511038/SN	27.1	25	250
3511400/CR			
3512038/SN	17.2	25	250
3512400/CR			

Material	Finish
Zinc Alloy	Satin Nickel (SN)/Chrome (CR)

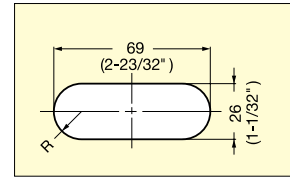
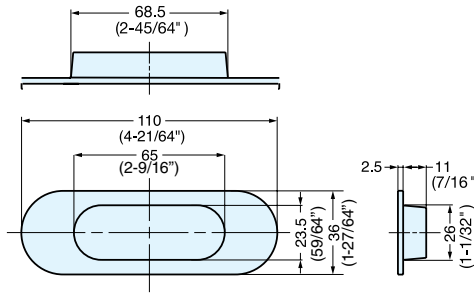
## RECESSED PULL

## 3922 SERIES



3922038/SN

3922400/CR



Panel Cut Out Dimensions

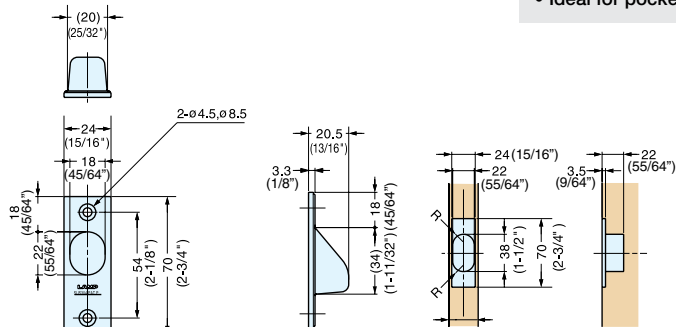
Item No.	Weight (g)	Box (pcs)	Carton (pcs)
3922038/SN	70.9	25	250
3922400/CR			

Material	Finish
Zinc Alloy	Satin Nickel (SN)/Chrome (CR)

## RECESSED PULL



## YK-70



• Ideal for pocket door application.

Door Thickness:  
min. 30 mm

Item No.	Weight (g)	Box (pcs)	Carton (pcs)
YK-70	37	20	200

Material	Finish
304 Stainless Steel	Satin