

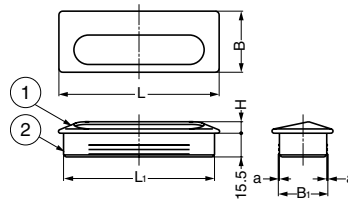
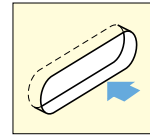
STAINLESS STEEL RECESSED PULL



UT



Installation



No.	Material	Finish/Colour
①	Stainless Steel (SUS304)	Satin
②	High Impact Polystyrene	Black

Item Code	Item Name	L	L ₁	H	B	B ₁	a	Weight	Box	Carton
100-010-004	UT- 75	75	71	7	36	30.8	0.4	15 g	40 pcs	400 pcs
100-010-161	UT-105	105	99	7.5	40	32.5	0.5	30 g	25 pcs	250 pcs
100-012-850	UT-140	140	134	7.5	47	40.5	0.5	45 g	15 pcs	150 pcs

STAINLESS STEEL RECESSED PULL



HH-D

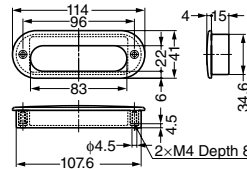


Features

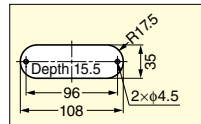
Sheet metal thickness: max. 2 mm

Parts Included

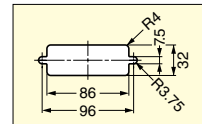
- For wood panel t = 20: truss head tapping screw M4x15 (SUS)
- For sheet metal t = 2: truss head tapping screw M4x10 (SUS)



Cut Out Dimensions (For wood door)



Cut Out Dimensions (For metal door)



Item Code	Item Name	Material	Finish/Colour	Weight	Box	Carton
100-012-951	HH-D	Stainless Steel (SCS14)/ABS	Mirror/Black	85 g	10 pcs	60 pcs

*SCS14 is equivalent of SUS316.

STAINLESS STEEL RECESSED PULL



HH-K

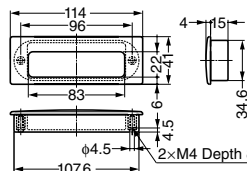


Features

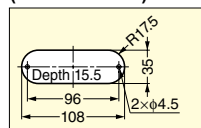
Sheet metal thickness: max. 2 mm

Parts Included

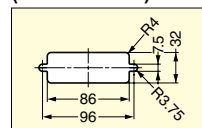
- For wood panel t = 20: truss head tapping screw M4x15 (SUS)
- For sheet metal t = 2: truss head tapping screw M4x10 (SUS)



Cut Out Dimensions (For wood door)



Cut Out Dimensions (For metal door)



Item Code	Item Name	Material	Finish/Colour	Weight	Box	Carton
100-012-952	HH-K	Stainless Steel (SCS14)/ABS	Mirror/Black	90 g	10 pcs	60 pcs

*SCS14 is equivalent of SUS316.

