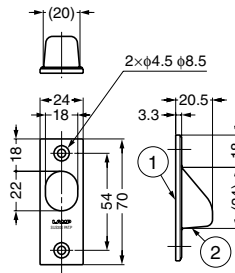


STAINLESS STEEL RECESSED PULL



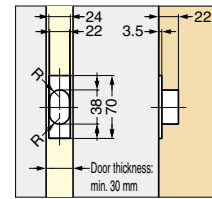
YK-70



Parts Included

Countersunk head tapping screw 4x20 (SUS)

Cut Out Dimensions



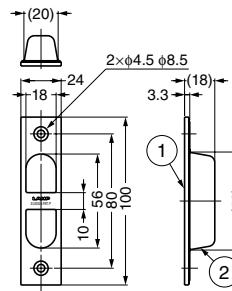
No.	Part Name	Material	Finish
①	Body	Stainless Steel (SUS304)	Satin
②	Case	Stainless Steel (SUS304)	Plain

Item Code	Item Name	Weight	Box	Carton
100-010-390	YK-70	37 g	20 pcs	200 pcs

STAINLESS STEEL RECESSED PULL



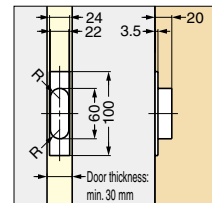
YK-W100



Parts Included

Countersunk head tapping screw 4x20 (SUS)

Cut Out Dimensions



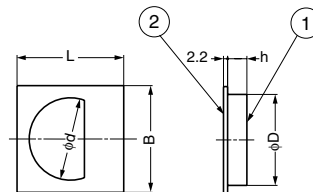
No.	Part Name	Material	Finish
①	Body	Stainless Steel (SUS304)	Satin
②	Case	Stainless Steel (SUS304)	Plain

Item Code	Item Name	Weight	Box	Carton
100-010-391	YK-W100	45 g	20 pcs	160 pcs

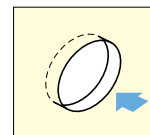
STAINLESS STEEL RECESSED PULL



SKH



Installation



No.	Material	Finish/Colour
①	High Impact Polystyrene	Black
②	Stainless Steel (SUS304)	Satin

Item Code	Item Name	L	B	h	D	d	Weight	Box	Carton
100-010-179	SKH-44	44	44	9.8	35.1	31	10 g	100 pcs	1,000 pcs
100-010-177	SKH-47	47	47	10.3	37.6	34	11 g	60 pcs	1,440 pcs
100-010-178	SKH-57	57	57	10.3	48.6	44	16 g	50 pcs	1,200 pcs