

STAINLESS STEEL RECESSED PULL



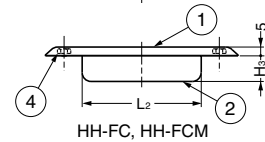
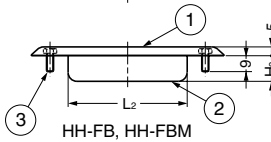
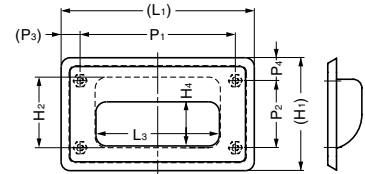
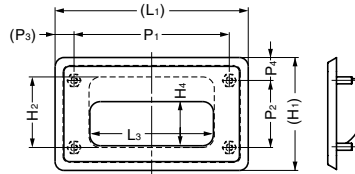
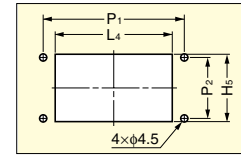
HH



Features

- Straightforward and simple design for easy integration.
- HH-FB-1, HH-FC-1, HH-FB-1M, HH-FC-1M are SEMI compliant (SEMIS8-0308).

Cut Out Dimensions



| No. | Part Name | Material | Finish |
|-----|-------------|--------------------------|---------------|
| ① | Front Plate | Stainless Steel (SUS304) | Satin, Mirror |
| ② | Back Cover | Stainless Steel (SUS304) | Mirror |
| ③ | M4 Stud | Stainless Steel (SUS304) | Plain |
| ④ | M4 Nut | Stainless Steel (SUS304) | Plain |

| Item Code | Item Name | Bolt/Nut | L ₁ | L ₂ | L ₃ | L ₄ | H ₁ | H ₂ | H ₃ | H ₄ | H ₅ | P ₁ | P ₂ | P ₃ | P ₄ | Weight | Carton |
|-------------|-----------|----------|----------------|----------------|----------------|----------------|----------------|----------------|----------------|----------------|----------------|----------------|----------------|----------------|----------------|--------|---------|
| 100-010-090 | HH-FB-1 | M4 Bolt | 138 | 96 | 95 | 99 | 88 | 62 | 21 | 35 | 64 | 110 | 65 | 14 | 11.5 | 170 g | 50 pcs |
| 100-010-091 | HH-FC-1 | M4 Nut | 138 | 96 | 95 | 99 | 88 | 62 | 21 | 35 | 64 | 110 | 65 | 14 | 11.5 | 170 g | 50 pcs |
| 100-010-092 | HH-FB-2 | M4 Bolt | 109.5 | 71 | 70 | 73 | 64 | 40 | 14.5 | 25 | 42 | 88 | 38 | 10.75 | 13 | 100 g | 100 pcs |
| 100-010-093 | HH-FC-2 | M4 Nut | 109.5 | 71 | 70 | 73 | 64 | 40 | 14.5 | 25 | 42 | 88 | 38 | 10.75 | 13 | 100 g | 100 pcs |
| 100-010-094 | HH-FB-3 | M4 Bolt | 94 | 61 | 60 | 63 | 60 | 43 | 12 | 25 | 45 | 76 | 32 | 9 | 14 | 80 g | 100 pcs |
| 100-010-095 | HH-FC-3 | M4 Nut | 94 | 61 | 60 | 63 | 60 | 43 | 12 | 25 | 45 | 76 | 32 | 9 | 14 | 80 g | 100 pcs |
| 100-012-104 | HH-FB-1M | M4 Bolt | 138 | 96 | 95 | 99 | 88 | 62 | 21 | 35 | 64 | 110 | 65 | 14 | 11.5 | 170 g | 50 pcs |
| 100-012-105 | HH-FC-1M | M4 Nut | 138 | 96 | 95 | 99 | 88 | 62 | 21 | 35 | 64 | 110 | 65 | 14 | 11.5 | 170 g | 50 pcs |
| 100-012-106 | HH-FB-2M | M4 Bolt | 109.5 | 71 | 70 | 73 | 64 | 40 | 14.5 | 25 | 42 | 88 | 38 | 10.75 | 13 | 100 g | 100 pcs |
| 100-012-107 | HH-FC-2M | M4 Nut | 109.5 | 71 | 70 | 73 | 64 | 40 | 14.5 | 25 | 42 | 88 | 38 | 10.75 | 13 | 100 g | 100 pcs |
| 100-012-108 | HH-FB-3M | M4 Bolt | 94 | 61 | 60 | 63 | 60 | 43 | 12 | 25 | 45 | 76 | 32 | 9 | 14 | 80 g | 100 pcs |
| 100-012-109 | HH-FC-3M | M4 Nut | 94 | 61 | 60 | 63 | 60 | 43 | 12 | 25 | 45 | 76 | 32 | 9 | 14 | 80 g | 100 pcs |

STAINLESS STEEL RECESSED PULL

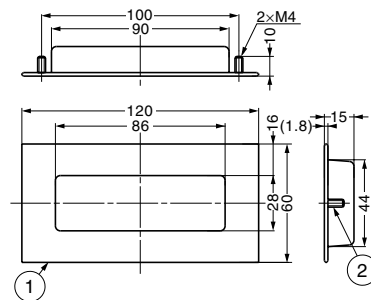


HH-AS2

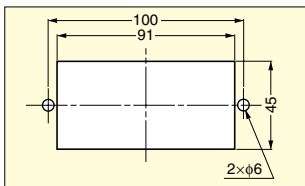


Parts Included

M4 nut and washer



Cut Out Dimensions



| No. | Part Name | Material | Finish |
|-----|-----------|--------------------------|--------|
| ① | Body | Stainless Steel (SUS304) | Satin |
| ② | Stud bolt | Stainless Steel (SUS304) | Plain |

| Item Code | Item Name | Weight | Box | Carton |
|-------------|-----------|--------|--------|---------|
| 100-019-030 | HH-AS2 | 50 g | 12 pcs | 240 pcs |