

BRASS RING PULL

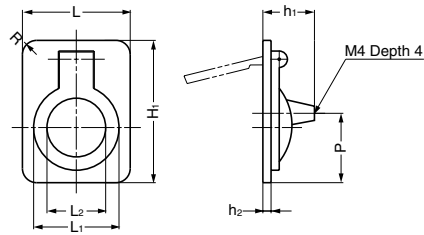


587

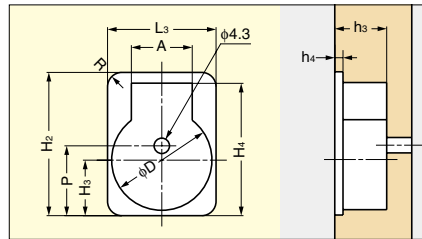


Parts Included

M4x25 truss head screw



Cut Out Dimensions



Item Code	Item Name	Material	Finish	L	L ₁	L ₂	H ₁	h ₁	h ₂	P	L ₃	H ₂	H ₃	H ₄	A	D	h ₃	h ₄	R	Weight	Box
100-016-010	587-40WB	Brass	Satin Nickel	30.5	24	16.5	40.3	13.6	2	20.6	30.5	40.3	16	39	18	28	15	2	4	40 g	100 pcs
100-016-011	587-40SB	Brass	Satin	30.5	24	16.5	40.3	13.6	2	20.6	30.5	40.3	16	39	18	28	15	2	4	40 g	100 pcs
100-016-014	587-50WB	Brass	Satin Nickel	38	30.5	21	51	14	2.5	25.5	38	51	21	48.5	21	35	15	2.5	6	59 g	50 pcs
100-016-015	587-50SB	Brass	Satin	38	30.5	21	51	14	2.5	25.5	38	51	21	48.5	21	35	15	2.5	6	59 g	50 pcs
100-016-018	587-60WB	Brass	Satin Nickel	47.5	36	24.5	60	15.5	2.5	30	47.5	60	23.5	55	21	41.5	16.5	2.5	6.5	86 g	50 pcs
100-016-019	587-60SB	Brass	Satin	47.5	36	24.5	60	15.5	2.5	30	47.5	60	23.5	55	21	41.5	16.5	2.5	6.5	86 g	50 pcs

BRASS RING PULL

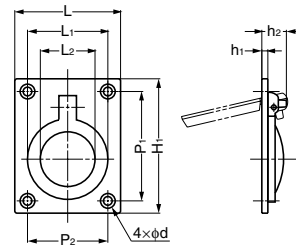


587B

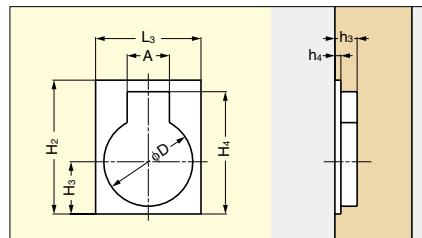


Parts Included

Slotted countersunk head wood screw 3.1x20



Cut Out Dimensions



Item Code	Item Name	Material	Finish	L	L ₁	L ₂	H ₁	P ₁	P ₂	P ₃	d	h ₁	h ₂	L ₃	H ₂	H ₃	H ₄	H ₅	A	D	h ₃	h ₄	Weight	Box
100-016-012	587B-40WB	Brass	Satin Nickel	30.5	24	16.5	40.3	32	22	11.85	3.5	2	11	30.5	40.3	16	39	32	18	28	13	2	28 g	100 pcs
100-016-013	587B-40SB	Brass	Satin	30.5	24	16.5	40.3	32	22	11.85	3.5	2	11	30.5	40.3	16	39	32	18	28	13	2	28 g	100 pcs
100-016-016	587B-50WB	Brass	Satin Nickel	38	30.5	21	51	41	28	15.5	4	2.5	12.7	38	51	21	48.5	41	21	35	15	2.5	54 g	50 pcs
100-016-017	587B-50SB	Brass	Satin	38	30.5	21	51	41	28	15.5	4	2.5	12.7	38	51	21	48.5	41	21	35	15	2.5	54 g	50 pcs
100-016-020	587B-60WB	Brass	Satin Nickel	47.5	36	24.5	60	49	36	18	4	2.5	13	47.5	60	23.5	55	49	21	41.5	14	2.5	80 g	50 pcs
100-016-021	587B-60SB	Brass	Satin	47.5	36	24.5	60	49	36	18	4	2.5	13	47.5	60	23.5	55	49	21	41.5	14	2.5	80 g	50 pcs