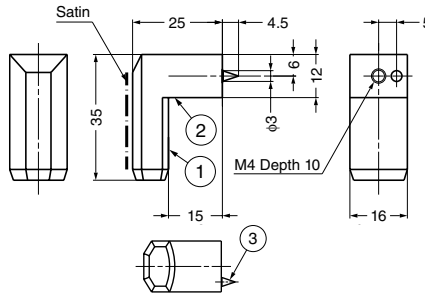


## STAINLESS STEEL KNOB



## CU-L-35



### Features

- Exquisite combination of satin and mirror finishes

### Parts Included

Truss head screw M4x25 (SUS)

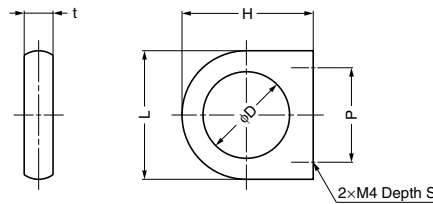
Item Code	Item Name	Weight	Box
100-012-824	CU-L-35	60 g	10 pcs

No.	Part Name	Material	Finish
①	Body 1	Stainless Steel (SUS303)	Mirror and Satin Combination
②	Body 2	Stainless Steel (SUS304)	Mirror
③	Pin	Stainless Steel (SUS303)	Mirror

## STAINLESS STEEL PULL



## SD



### Parts Included

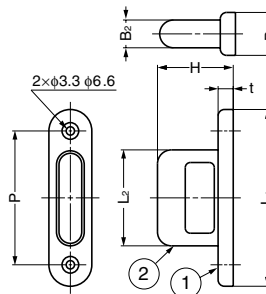
Truss head screw M4x25 (SUS)

Item Code	Item Name	Material	Finish	L	H	t	D	P	S	Weight	Box	Carton
100-015-022	SD-24S	Stainless Steel (SCS13)	Satin	24.5	25	5.5	16.5	18	5	10 g	80 pcs	800 pcs
100-015-023	SD-24M	Stainless Steel (SCS13)	Mirror	24.5	25	5.5	16.5	18	5	10 g	80 pcs	800 pcs
100-015-020	SD-30S	Stainless Steel (SCS13)	Satin	30.5	31.5	6.5	20.5	21	6	22 g	50 pcs	500 pcs
100-015-021	SD-30M	Stainless Steel (SCS13)	Mirror	30.5	31.5	6.5	20.5	21	6	22 g	50 pcs	500 pcs

## STAINLESS STEEL PULL



## HS



### Features

- Made from elastomer for a soft, pleasant touch.
- Bottom is made from stainless steel.

### Parts Included

Countersunk head wood screw 3.1x20 (SUS)

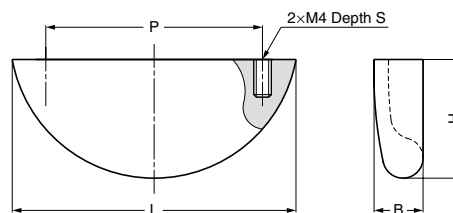
Item Code	Item Name	L <sub>1</sub>	L <sub>2</sub>	P	B <sub>1</sub>	B <sub>2</sub>	H	t	Weight	Box	Carton
100-012-192	HS-60S	60	30	44	16	9	25	5	13 g	40 pcs	400 pcs
100-012-193	HS-70S	70	38	53	17	11	30	6	20 g	30 pcs	300 pcs

No.	Material	Finish/Colour
①	Stainless Steel (SUS304)	Satin
②	Elastomer (TPE)	Black

## STAINLESS STEEL PULL



## RD



### Features

- Gentle curving design makes it fit the shape of hands and makes it easy to grab.

### Parts Included

Truss head screw M4x25 (SUS)

Item Code	Item Name	Material	Finish	L	H	B	P	S	Weight	Box	Carton
100-901-049	RD-55SM	Stainless Steel (SCS14)	Mirror	55	23	9.5	42	8	50 g	30 pcs	360 pcs
100-901-050	RD-90SM	Stainless Steel (SCS14)	Mirror	90	25.5	10.5	74	10	80 g	20 pcs	240 pcs

\*SCS14 is equivalent of SUS316.