

Zwei L is the flagship brand of Sugatsune and represents premium Japanese hardware quality.

Zwei L stands for "Zwei Lichter" in German: a dual highlight of mirror finish and lustrous satin on a faceted profile.

Manufactured from solid billets of the finest quality 316 stainless steel,

Zwei L brings the space luxury and dazzles your eyes.



Video Link



Zwei L STAINLESS STEEL KNOB



ZL-1901

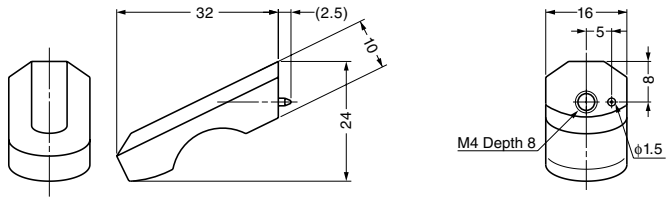


Features

- Made of highly corrosion resistant SUS316
- Ultrapremium Zwei L finish. Zwei L finish: Using top class polishing technology, these products combine the elegance of Satin with the deep glow of a Mirror.
- When combined with ZL-2302 (sold separately), can be used on glass.

Parts Included

M4x25 truss head screw (SUS)



Item Code	Item Name	Material	Finish	Weight	Box
100-011-010	ZL-1901	Stainless Steel (SUS316)	Zwei L Finish	34 g	8 pcs

Zwei L STAINLESS STEEL KNOB



ZL-1902

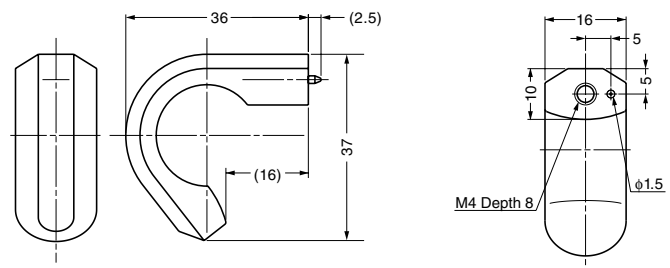


Features

- Made of highly corrosion resistant SUS316
- Ultrapremium Zwei L finish. Zwei L finish: Using top class polishing technology, these products combine the elegance of Satin with the deep glow of a Mirror.
- When combined with ZL-2302 (sold separately), can be used on glass.

Parts Included

M4x25 truss head screw (SUS)



Item Code	Item Name	Material	Finish	Weight	Box
100-011-011	ZL-1902	Stainless Steel (SUS316)	Zwei L Finish	52 g	8 pcs