

## Zwei L STAINLESS STEEL KNOB



ZL-1909

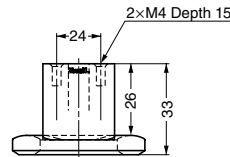


## Features

- Made of highly corrosion resistant SUS316
- Ultrapremium Zwei L finish. Zwei L finish: Using top class polishing technology, these products combine the elegance of Satin with the deep glow of a Mirror.
- Can be used on either wood or tempered glass.
- XL-2105 is a hook with the same type of design.

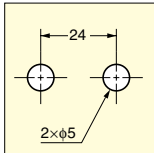
## Parts Included

- For wooden doors : 16 - 23 mm : Screw M4x28 (SUS)
- For glass doors : 4, 5, 6 mm : Screw M4x16 (SUS)
- Gasket

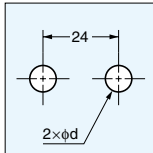


## Cut Out Dimensions

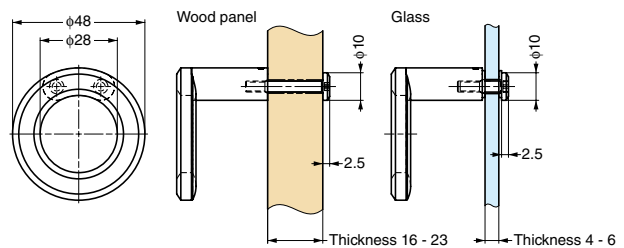
## Wooden doors



## Glass doors



Thickness 4, 5 : d=5  
Thickness 6 : d=6



Item Code	Item Name	Material	Finish	Weight
100-022-171	ZL-1909	Stainless Steel (SUS316)	Zwei L Finish	97 g

## Zwei L STAINLESS STEEL KNOB



ZL-1907-24

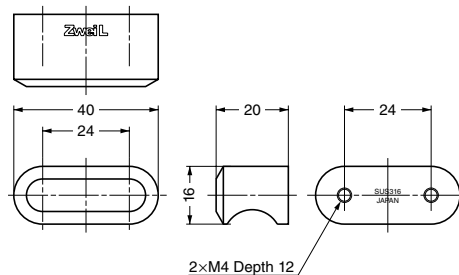


## Features

- Made of highly corrosion resistant SUS316
- Ultrapremium Zwei L finish. Zwei L finish: Using top class polishing technology, these products combine the elegance of Satin with the deep glow of a Mirror.
- Can be used on either wood or tempered glass.
- XL-1504 is a door knob with the same type of design.

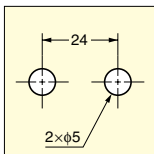
## Parts Included

- For wooden doors : 16 - 23 mm : Screw M4x28 (SUS)
- For glass doors : 4, 5, 6 mm : Screw M4x16 (SUS)
- Gasket

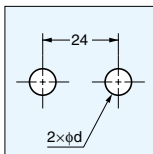


## Cut Out Dimensions

## Wooden doors



## Glass doors



Thickness 4, 5 : d=5  
Thickness 6 : d=6

Item Code	Item Name	Material	Finish	Weight
100-011-016	ZL-1907-24	Stainless Steel (SUS316)	Zwei L Finish	78 g