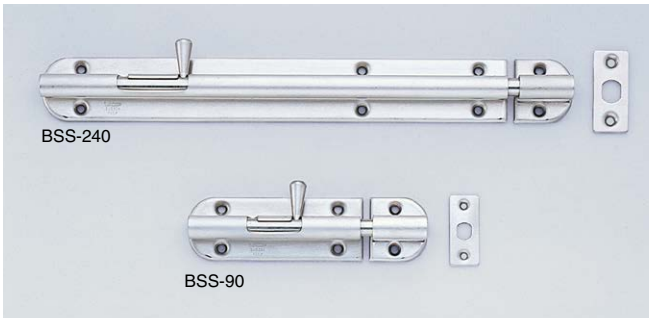


# SPRING LOADED BARREL BOLT



BSS



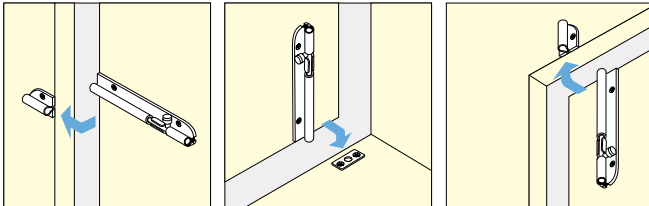
### Features

- Ideal for harsh and high corrosion environments.
- Knob springs back into sleeve to keep bolt in locked or unlocked position.
- Can be installed vertically or horizontally.
- 2 counter plates included for different mountings.

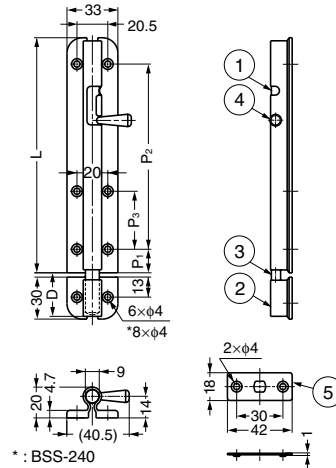
### Parts Included

Countersunk head wood screw 3.1×20 (SUS)

### Application Example



No.	Part Name	Material	Finish
①	Body	Stainless Steel (SUS304)	Satin
②	Strike	Stainless Steel (SUS304)	Satin
③	Bar	Stainless Steel (SUS303)	-
④	Knob	Stainless Steel (SUS303)	-
⑤	Counter Plate	Stainless Steel (SUS304)	Satin

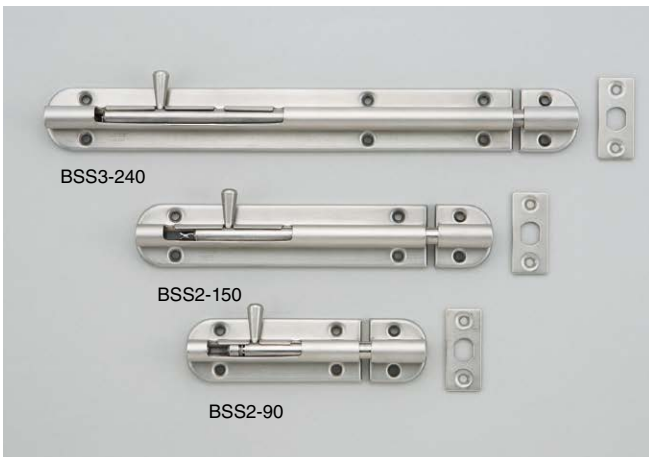


Item Code	Item Name	L	P <sub>1</sub>	P <sub>2</sub>	P <sub>3</sub>	D	Weight	Box	Carton
140-052-002	BSS- 90	90	13	60	-	24	142 g	15 pcs	150 pcs
140-052-003	BSS-150	150	15	115	-	32	215 g	10 pcs	100 pcs
140-052-004	BSS-240	240	15	205	60	32	330 g	6 pcs	60 pcs

# SPRING LOADED BARREL BOLT



BSS2, BSS3



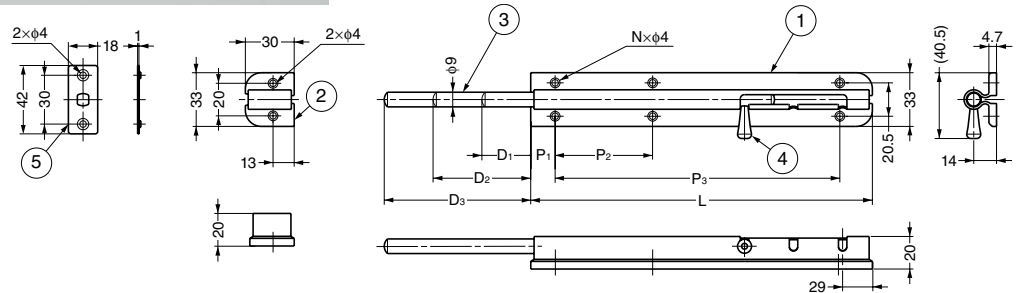
### Features

- Extra sleeve for locking offers flexibility in application.
- Ideal for harsh and high corrosion environments.
- Knob springs back into sleeve to keep bolt in locked or unlocked position.
- Can be installed vertically or horizontally.
- 2 counter plates included for different mountings.

### Parts Included

Countersunk head wood screw 3.5×20 (SUS)

No.	Part Name	Material	Finish
①	Body	Stainless Steel (SUS304)	Satin
②	Strike	Stainless Steel (SUS304)	Satin
③	Bar	Stainless Steel (SUS303)	-
④	Knob	Stainless Steel (SUS303)	-
⑤	Counter Plate	Stainless Steel (SUS304)	Satin



Item Code	Item Name	L	L <sub>2</sub>	P <sub>1</sub>	P <sub>2</sub>	P <sub>3</sub>	D <sub>1</sub>	D <sub>2</sub>	D <sub>3</sub>	N	Weight	Box	Carton
140-050-042	BSS2- 90	90	14	13	-	60	21	42	-	4	140 g	15 pcs	150 pcs
140-050-041	BSS2-150	150	18	15	-	115	30	60	-	4	212 g	10 pcs	100 pcs
140-050-043	BSS3-240	240	-	15	60	205	30	60	90	6	320 g	6 pcs	60 pcs