

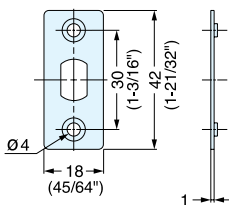
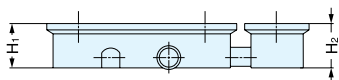
# SPRING LOADED BARREL BOLT



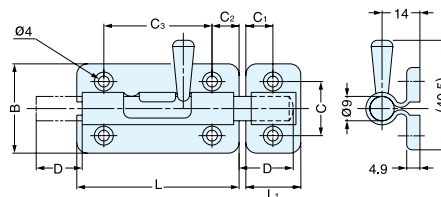
BLS-90



BLS-60



- Knob springs back into sleeve to keep bolt in locked or unlocked position.
- 2 counterplates included for different mountings.



Material	Finish
304 Stainless Steel	Satin

Item No.	L	L <sub>1</sub>	H <sub>1</sub>	H <sub>2</sub>	B	C	C <sub>1</sub>	C <sub>2</sub>	C <sub>3</sub>	D	Weight (g)	Box (pcs)	Carton (pcs)
BLS-60	60 (2-23/64")	25.4 (1")	20	20.4	33 (1-19/64")	20 (51/64")	12.7	10.0	40	17	109	20	200
BLS-90	90 (3-35/64")							12.5	65	24	147	15	150

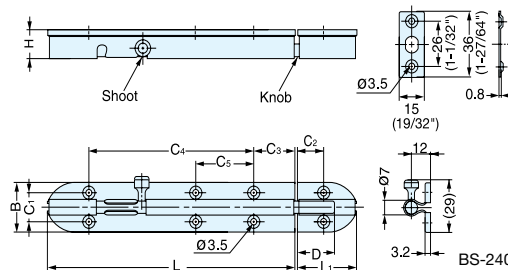
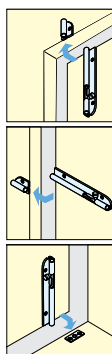
# BARREL BOLT



BS-240



BS-90



- Knob springs back into sleeve to keep bolt in locked or unlocked position.
- 2 counterplates included for different mountings.
- Supplied with mortise and surface strike.

Part Name	Material	Finish
Body and Plates	304 Stainless Steel	Satin
Bolt and Knob	Brass	Nickel

Item No.	L	L <sub>1</sub>	H	B	C <sub>1</sub>	C <sub>2</sub>	C <sub>3</sub>	C <sub>4</sub>	C <sub>5</sub>	D	Weight (g)	Box (pcs)	Carton (pcs)
BS-90	90 (3-35/64")	36 (1-27/64")	16.5	27 (1-1/16")	16 (5/8")	15	14.5	58	-	24	85	30	300
BS-150	150 (5-29/32")						25.0	100	-	125	20	200	
BS-240	240 (9-29/64")						18.5	192	71	190	10	100	

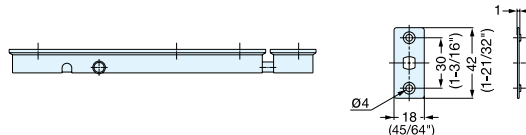
# SPRING LOADED BARREL BOLT



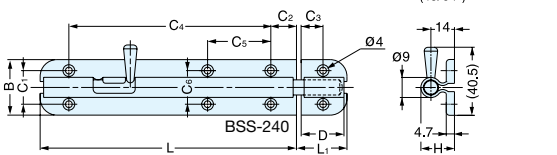
BSS-240



BSS-90



- Knob springs back into sleeve to keep bolt in locked or unlocked position.
- 2 counterplates included for different mountings.



Part Name	Material	Finish
Body and Plates	304 Stainless Steel	Satin
Bolt and Knob	303 Stainless Steel	Plain

Item No.	L	L <sub>1</sub>	H	B	C <sub>1</sub>	C <sub>2</sub>	C <sub>3</sub>	C <sub>4</sub>	C <sub>5</sub>	C <sub>6</sub>	D	Weight (g)	Box (pcs)	Carton (pcs)
BSS-90	90 (3-35/64")	30 (1-3/16")	20	33 (1-19/64")	20.5 (13/16")	13	13	60	-	-	24	142	15	150
BSS-150	150 (5-29/32")						15	115	-	20	32	215	10	100
BSS-240	240 (9-29/64")						15	205	60	-	32	330	6	60