

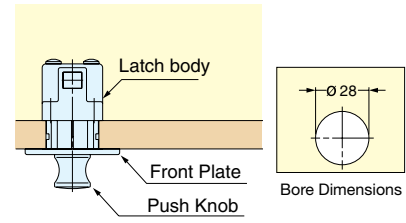
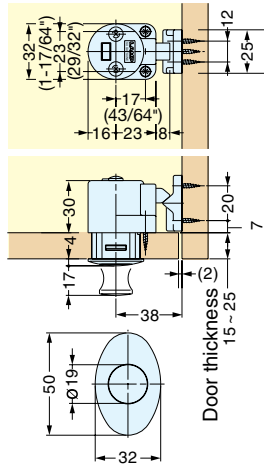
# PUSH KNOB LATCH



## DPL-OV



- Knob and Latch combined:
  - Knob is stored flush when pushed in and not in use.
  - Knob pops out when pressed to open the door.
  - Latch securely locks the door with deadbolt.
- Door Thickness: 15 mm~25 mm (19/32"~ 63/64").
- Holding Force: 10 kg (22 lbs)
- Non-Handed: Can be installed on left or right side.
- Other ring shape available.
  - Round: DPL-RO
  - Square: DPL-SQ



| Item No.  | Finish | Holding Force (kg) | Weight (g) | Box (pcs) | Carton (pcs) |
|-----------|--------|--------------------|------------|-----------|--------------|
| DPL-OV-G  | Gold   | 10 (22lbs)         | 72         | 10        | 80           |
| DPL-OV-CR | Chrome |                    |            |           |              |

| Part Name    | Material   |
|--------------|------------|
| Push Knob    | Zinc Alloy |
| Front Plate  |            |
| Latch Body   | ABS        |
| CounterPlate |            |

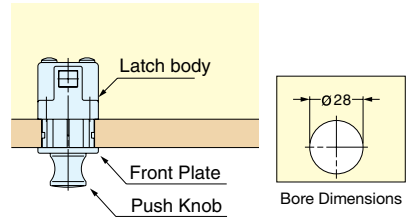
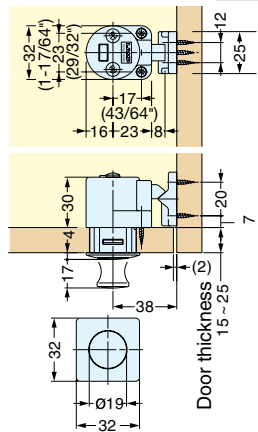
# PUSH KNOB LATCH



## DPL-SQ



- Knob and Latch combined:
  - Knob is stored flush when pushed in and not in use.
  - Knob pops out when pressed to open the door.
  - Latch securely locks the door with deadbolt.
- Door Thickness: 15 mm~25 mm (19/32"~ 63/64").
- Holding Force: 10 kg (22 lbs)
- Non-Handed: Can be installed on left or right side.
- Other ring shape available.
  - Round: DPL-RO
  - Oval: DPL-OV



| Item No.  | Finish       | Holding Force (kg) | Weight (g) | Box (pcs) | Carton (pcs) |
|-----------|--------------|--------------------|------------|-----------|--------------|
| DPL-SQ-G  | Gold         | 10 (22lbs)         | 72         | 10        | 80           |
| DPL-SQ-CR | Chrome       |                    |            |           |              |
| DPL-SQ-SN | Satin Nickel |                    |            |           |              |

| Part Name    | Material   |
|--------------|------------|
| Push Knob    | Zinc Alloy |
| Front Plate  |            |
| Latch Body   | ABS        |
| CounterPlate |            |