

MAGNETIC CATCH

MC-158



Features

- 2.6mm ultra thin magnet operates well even in tight spaces
- Similar item with strong magnetic force: MC-159-8 (P.263)
- Similar item made from stainless steel: MC-159-SUS (P.263)

Remarks

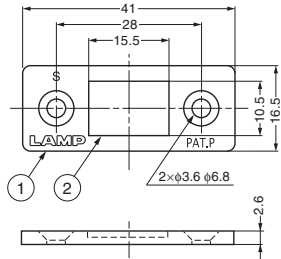
Max. temperature: 80°C

Recommended Screw

Countersunk head wood screw or Countersunk head screw M3

Sold Separately

Counter plate: MC-YN001U (P.273)



*Without the mark "PAT.P" from the next production lot

Counter Plate (Sold Separately)

Item Code	Item Name	Page
140-059-555	MC-YN001U	P.273
140-038-025	MC-YN001U-BL	P.273

No.	Part Name	Material	Finish
①	Body	Steel	Nickel
②	Magnet	Neodymium	Nickel

Body

Item Code	Item Name	Magnetic Force N	Magnetic Force kgf	Weight	Box	Carton
140-050-014	MC-158	14.7 N	1.5 kgf	12 g	200 pcs	1,000 pcs

MAGNETIC CATCH

MC-159



Features

- 2.6mm ultra thin magnet operates well even in tight spaces
- Strong magnetic force
- Similar item with strong magnetic force: MC-159-8 (P.263)
- Similar item made from stainless steel: MC-159-SUS (P.263)

Remarks

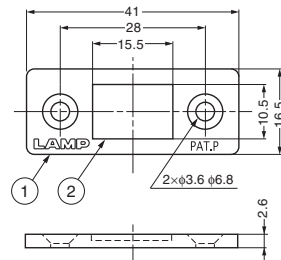
Max. temperature: 80°C

Recommended Screw

Countersunk head wood screw or Countersunk head screw M3

Sold Separately

Counter plate: MC-YN001U (P.273)



*Without the mark "PAT.P" from the next production lot

Counter Plate (Sold Separately)

Item Code	Item Name	Page
140-059-555	MC-YN001U	P.273
140-038-025	MC-YN001U-BL	P.273

No.	Part Name	Material	Finish (MC-159)	Finish (MC-159-BL)
①	Body	Steel	Nickel	Copper Plating (Black)
②	Magnet	Neodymium	Nickel	Black Chromate (Trivalent)

Body

Item Code	Item Name	Magnetic Force N	Magnetic Force kgf	Weight	Box	Carton
140-058-061	MC-159	39 N	4 kgf	12 g	200 pcs	1,000 pcs
140-038-023	MC-159-BL	39 N	4 kgf	12 g	200 pcs	1,000 pcs