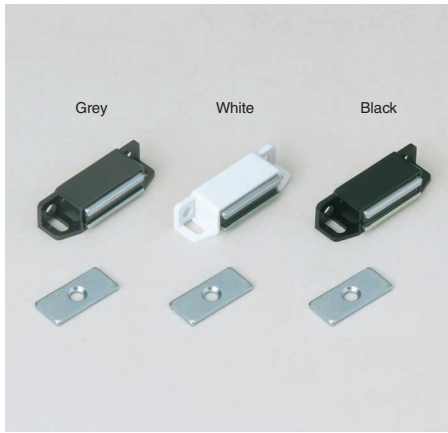


MAGNETIC CATCH MC0099



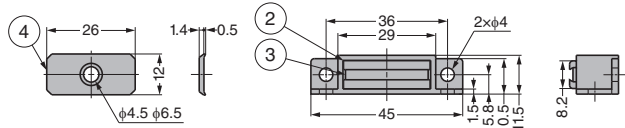
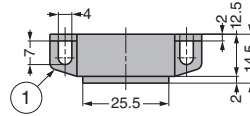
● Can be installed vertically or horizontally.

[Remarks]

- Be sure to read the "Cautions" 1.
- Only grey body with magnetic force 51N (5.2kgf).

[Parts Included]

- Counter plate SP0207 2.



No.	Part Name	Material	Finish / Colour
①	Body	ABS PC	White, Black Grey
②	Yoke	Steel (SPCC)	Coloured Zinc Chromate
③	Magnet	Ferrite	-
④	Counter Plate	Steel	Clear Zinc Chromate

RHS	CAD	Item Code	Item Name	Colour	Magnetic Force N	Magnetic Force kgf	Weight (g)	Box (pcs)	Carton (pcs)
☑	☑	140-050-501	MC0099BP	Black	10.8	1.1	16.3	100	1000
☑	☑	140-050-502	MC0099WP	White				100	1000
☑	☑	140-050-503	MC0099SBP	Black	37.2	3.8		100	1000
☑	☑	140-050-504	MC0099SWP	White				100	1000
☑	☑	140-050-505	MC0099GP	Grey	51	5.2		100	1000

Refer to 1 : P.607, 2 : P.639

SEALED MAGNETIC CATCH (W/SWITCH) MC-JM74SW-30



- Waterproof switch built-in magnetic catch. It functions as a catch and power switch depending on opening/closing of door or lid.
- Single-pole double-throw switch.
- Conforms to the specified electrical appliances and materials in the Electrical Appliances and Material Safety Act (PSE).
- Can be installed vertically or horizontally. Processing for passing through power cord is required for horizontal installation.
- The body coated with resin prevents dust. And the built-in switch is designed to meet IP67.
- Movable adsorption sheet of counter plate prevents malfunction of catch and switch.

[Specifications]

Rated Voltage and Current	AC250V 5A (Load Resistance) AC125V 5A (Load Resistance) DC30V 5A (Load Resistance)
Insulation Resistance	Min. 100MΩ (DC500V)
Contact Resistance (Initial Value)	Max. 100MΩ
Min. Applicable Load	DC5V 160mA
Operating Temperature	-40~+80°C, Max. 60% RH (No Freezing and Condensation)
Lead Wire	Single Core Heat Resistant PVC Cord 0.75 mm ² (<PS> E Certification)

[Switch Contact Type]

NC NO COM NC (Red) = Normally Close (Red)(Blue)(Black)
 NO (Blue) = Normally Open
 COM (Black) = Common
 The power switch operates depending on opening/closing of door or lid.

[Two Types of Operation Can Be Chosen by Selecting Connection]

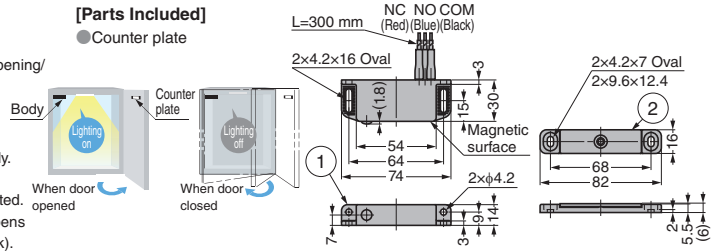
- Connecting NO (Blue) and COM (Black)
 Energised when the counter plate is in contact with the body.
- Connecting NC (Red) and COM (Black)
 Energised when the counter plate and the body are separated.
 Example) To turn on the inspection light when the door opens in cabinet etc., connect NC (red) and COM (black).

[Remarks]

- Be sure to read the "Cautions" 1.
- Do not use as a door stopper. Otherwise, it may be damaged.
- If the product containing this product falls under other category than the specified electrical appliances and materials, please report to the regulatory agency.
- Do not use in contact with steam, hot water and water. Do not leave strongly acidic or basic detergents to avoid deteriorating.

[Parts Included]

- Counter plate



RHS	CAD	Item Code	Item Name	Magnetic Force N	Magnetic Force kgf	Weight (g)	Box (pcs)	Carton (pcs)
☑	☑	140-017-555	MC-JM74SW-30	29.4	3	80	10	80

No.	Part Name	Material	Finish / Colour
①	Body	POM/Neodymium	Black
②	Counter Plate	POM/Stainless Steel (SUS430)	Black/Barrel Polished

Refer to 1 : P.607