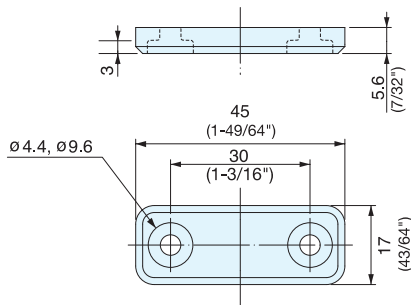


SEALED MAGNETIC CATCH



MC-JM45



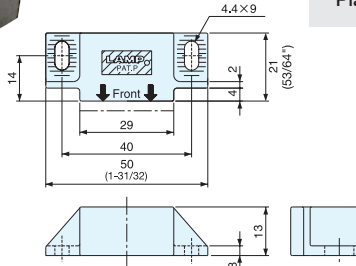
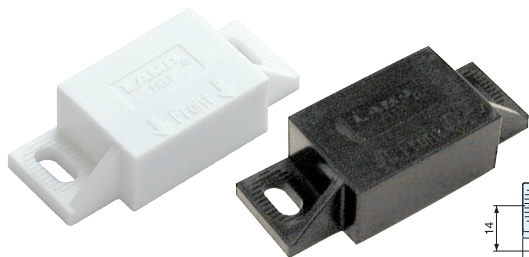
- Hermetically sealed, ideal for high corrosion environments.
- No metal-to-metal contact, ideal for cleanroom applications.
- Strong magnetic force.
- Optional counterplate sold separately:
 - Stainless Steel - MC-JM49, AS-68
 - Plastic Sealed - MC-JMP45WT, MC-JMP45BL
- Note: Only MC-JM45WT is NSF certified.

Item No.	Magnetic Force (kg)	Weight (g)	Box (pcs)	Carton (pcs)	Part Name	Material	Finish/Color
MC-JM45WT	3 (6.6 lbs)	8.5	100	1000	Body	Polypropylene	White (WT)/Black (BL)
MC-JM45BL					Magnet	Neodymium	-

SEALED MAGNETIC CATCH



MC-JM50



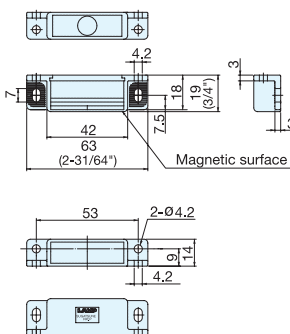
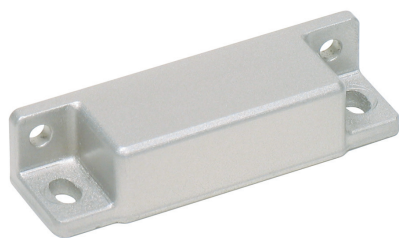
- Hermetically sealed, ideal for high corrosion resistance.
- No metal-to-metal contact, ideal for cleanroom application.
- Strong magnetic force.
- Optional counterplate:
 - Stainless Steel - MC-JM49, AS-68
 - Plastic Sealed - MC-JMP45

Item No.	Magnetic Force (kg)	Weight (g)	Box (pcs)	Carton (pcs)	Part Name	Material	Finish/Color
MC-JM50/WT	3 (6.6 lbs)	21	24	480	Body	Polyacetal	White/Black
MC-JM50/BL					Magnet	Neodymium	-

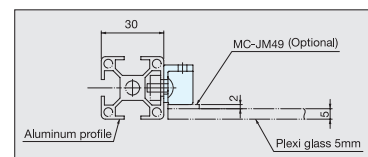
SEALED MAGNETIC CATCH



MC-JM63G



- Hermetically sealed, ideal for high corrosion resistance.
- No metal-to-metal contact, ideal for cleanroom application.
- Strong magnetic force.
- Optional counterplate:
 - Stainless Steel - MC-JM49, AS-68
 - Plastic Sealed - MC-JMP45



Item No.	Magnetic Force (kg)	Weight (g)	Box (pcs)	Carton (pcs)	Part Name	Material	Finish/Color
MC-JM63G-15	1.5 (3.3 lbs)	20	50	500	Body	Polyacetal	Light Grey
MC-JM63G-30	3.0 (6.6 lbs)				Magnet	Neodymium	-
MC-JM63G-50	5.0 (11.0 lbs)						