

MAGNETIC CATCH (SNAP-IN TYPE)

MC-FS

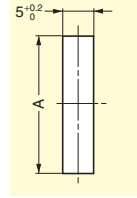


Features

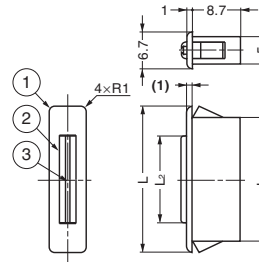
- Snap-in magnetic catch for sheet metal applications.
- Thin body for tight spaces.

Cut Out Dimensions

Item Name	Door Thickness	A
MC-FS-2	0.8	22.65 ^{+0.15} ₀
	1.0	22.8 ^{+0.1} ₀
	1.2	22.9 ^{+0.1} ₀
MC-FS-4W	0.8	39.9 ^{+0.2} ₀
	1.0	40.5 ^{+0.2} ₀
	1.2	41.8 ^{+0.2} ₀
MC-FS-4SW	0.8	40.2 ^{+0.2} ₀
	1.0	40.5 ^{+0.2} ₀
	1.2	41.8 ^{+0.2} ₀



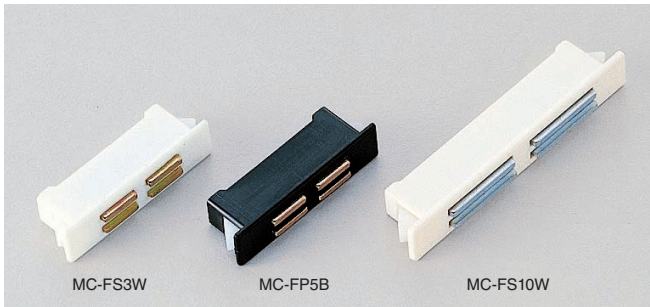
No.	Part Name	Material	Finish/Colour
①	Body	ABS:(MC-FS-2W,MC-FS-25W,MC-FS-4W), PA(MC-FS4SW)	White
②	Yoke	Steel	Clear Zinc Chromate
③	Magnet	Ferrite, Neodymium	-



Item Code	Item Name	Material	L	L ₁	L ₂	Magnetic Force N	Magnetic Force kgf	Weight	Box	Carton
140-013-016	MC-FS-2 W	Ferrite	26.5	22.4	16	15 N	1.5 kgf	3.5 g	400 pcs	4,000 pcs
140-013-017	MC-FS-2SW	Neodymium	26.5	22.4	16	34 N	3.5 kgf	3.5 g	400 pcs	4,000 pcs
140-013-015	MC-FS-4 W	Ferrite	45	39.6	30.3	25 N	2.5 kgf	5.8 g	200 pcs	2,000 pcs
140-013-014	MC-FS-4SW	Neodymium	45	39.6	30.3	69 N	7 kgf	5.8 g	200 pcs	2,000 pcs

MAGNETIC CATCH (SNAP-IN TYPE)

MC-FS, MC-FP5, MC-FB10



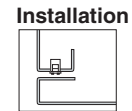
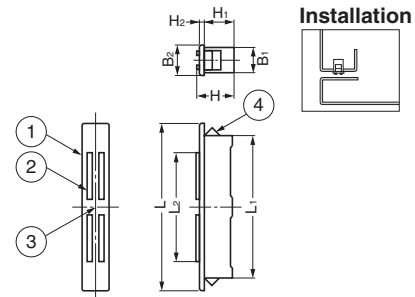
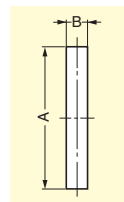
Features

Snap-in magnetic catch for sheet metal applications.

No.	Part Name	Material	Finish/Colour
①	Body	ABS	White, Black
②	Yoke	Steel	Yellow Zinc Chromate, Clear Zinc Chromate (MC-FB10)
③	Magnet	Ferrite	-
④	Spring	Polyacetal (POM)	Natural, White (MC-FS10, MC-FB10)

Cut Out Dimensions

Door Thickness	MC-FS3		MC-FP5		MC-FS10		MC-FB10	
	A	B	A	B	A	B	A	B
0.5	22.5	8.3	-	-	-	-	54.9	10
0.8	-	-	34.1	8.2	55	8.2	-	-
1.0	-	-	34.1	8.2	55	8.2	56.1	10
1.2	-	-	34.5	8.2	55.5	8.2	-	-
1.6	-	-	35	8.2	56	8.2	57.5	10
2.0	-	-	36.5	8.2	56.5	8.2	58.5	10



MC-FS10W / MC-FS10B : The shape of the spring will change when the current stock is run out.

Item Code	Item Name	Colour	L	L ₁	L ₂	B ₂	B ₁	H	H ₁	H ₂	Magnetic Force	Weight	Box	Carton	
140-050-005	MC-FS3W	White	24.2	22.4	15	9.6	8.2	12.3	10.9	0.9	12.7 N	1.3 kgf	5 g	60 pcs	2,160 pcs
140-050-086	MC-FP5W	White	40	33.9	21.6	10	8	13.5	11.2	1.2	21.6 N	2.2 kgf	9 g	200 pcs	2,000 pcs
140-050-293	MC-FS10W	White	64	54.5	43	10	8	14	11.5	1.5	44.1 N	4.5 kgf	20 g	50 pcs	1,000 pcs
140-055-099	MC-FB10	White	64	54.5	43	10.5	9.7	14	11.5	1.5	54.9 N	5.6 kgf	25 g	500 pcs	-
140-050-006	MC-FS3B	Black	24.2	22.4	15	9.6	8.2	12.3	10.9	0.9	12.7 N	1.3 kgf	5 g	60 pcs	2,160 pcs
140-050-087	MC-FP5B	Black	40	33.9	21.6	10	8	13.5	11.2	1.2	21.6 N	2.2 kgf	9 g	200 pcs	2,000 pcs
140-050-294	MC-FS10B	Black	64	54.5	43	10	8	14	11.5	1.5	44.1 N	4.5 kgf	20 g	50 pcs	1,000 pcs