

# MAGNETIC CATCH (SNAP-IN TYPE)

# MC-FS

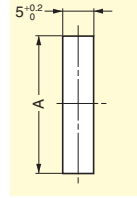


### Features

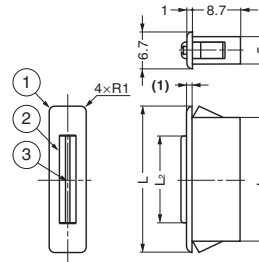
- Snap-in magnetic catch for sheet metal applications.
- Thin body for tight spaces.

### Cut Out Dimensions

| Item Name | Door Thickness | A                                   |
|-----------|----------------|-------------------------------------|
| MC-FS-2   | 0.8            | 22.65 <sup>+0.15</sup> <sub>0</sub> |
|           | 1.0            | 22.8 <sup>+0.1</sup> <sub>0</sub>   |
|           | 1.2            | 22.9 <sup>+0.1</sup> <sub>0</sub>   |
| MC-FS-4W  | 0.8            | 39.9 <sup>+0.2</sup> <sub>0</sub>   |
|           | 1.0            | 40.5 <sup>+0.2</sup> <sub>0</sub>   |
|           | 1.2            | 41.8 <sup>+0.2</sup> <sub>0</sub>   |
| MC-FS-4SW | 0.8            | 40.2 <sup>+0.2</sup> <sub>0</sub>   |
|           | 1.0            | 40.5 <sup>+0.2</sup> <sub>0</sub>   |
|           | 1.2            | 41.8 <sup>+0.2</sup> <sub>0</sub>   |



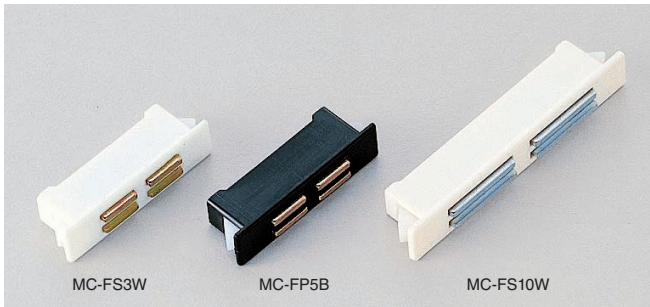
| No. | Part Name | Material   | Finish/Colour       |
|-----|-----------|--|---------------------|
| ①   | Body      | ABS:(MC-FS-2W,MC-FS-25W,MC-FS-4W),<br>PA(MC-FS4SW) | White               |
| ②   | Yoke      | Steel  | Clear Zinc Chromate |
| ③   | Magnet    | Ferrite, Neodymium                                 | -                   |



| Item Code   | Item Name | Material  | L    | L <sub>1</sub> | L <sub>2</sub> | Magnetic Force N | Magnetic Force kgf | Weight | Box     | Carton    |
|-------------|-----------|-----------|------|----------------|----------------|------------------|--------------------|--------|---------|-----------|
| 140-013-016 | MC-FS-2 W | Ferrite   | 26.5 | 22.4           | 16             | 15 N             | 1.5 kgf            | 3.5 g  | 400 pcs | 4,000 pcs |
| 140-013-017 | MC-FS-2SW | Neodymium | 26.5 | 22.4           | 16             | 34 N             | 3.5 kgf            | 3.5 g  | 400 pcs | 4,000 pcs |
| 140-013-015 | MC-FS-4 W | Ferrite   | 45   | 39.6           | 30.3           | 25 N             | 2.5 kgf            | 5.8 g  | 200 pcs | 2,000 pcs |
| 140-013-014 | MC-FS-4SW | Neodymium | 45   | 39.6           | 30.3           | 69 N             | 7 kgf              | 5.8 g  | 200 pcs | 2,000 pcs |

# MAGNETIC CATCH (SNAP-IN TYPE)

# MC-FS, MC-FP5, MC-FB10



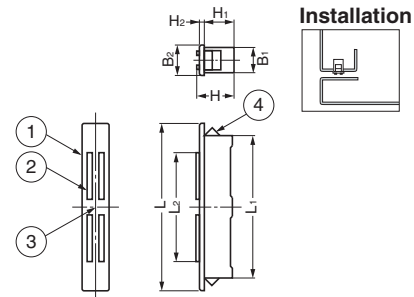
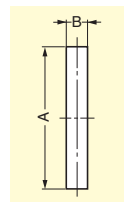
### Features

Snap-in magnetic catch for sheet metal applications.

| No. | Part Name | Material         | Finish/Colour                                       |
|-----|-----------|------------------|---|
| ①   | Body      | ABS              | White, Black  |
| ②   | Yoke      | Steel            | Yellow Zinc Chromate, Clear Zinc Chromate (MC-FB10) |
| ③   | Magnet    | Ferrite          | -   |
| ④   | Spring    | Polyacetal (POM) | Natural, White (MC-FS10, MC-FB10)                   |

### Cut Out Dimensions

| Door Thickness | MC-FS3 |     | MC-FP5 |     | MC-FS10 |     | MC-FB10 |    |
|----------------|--------|-----|--------|-----|---------|-----|---------|----|
|                | A      | B   | A      | B   | A       | B   | A       | B  |
| 0.5            | 22.5   | 8.3 | -      | -   | -       | -   | 54.9    | 10 |
| 0.8            | -      | -   | 34.1   | 8.2 | 55      | 8.2 | -       | -  |
| 1.0            | -      | -   | 34.1   | 8.2 | 55      | 8.2 | 56.1    | 10 |
| 1.2            | -      | -   | 34.5   | 8.2 | 55.5    | 8.2 | -       | -  |
| 1.6            | -      | -   | 35     | 8.2 | 56      | 8.2 | 57.5    | 10 |
| 2.0            | -      | -   | 36.5   | 8.2 | 56.5    | 8.2 | 58.5    | 10 |



MC-FS10W / MC-FS10B : The shape of the spring will change when the current stock is run out.

| Item Code   | Item Name | Colour | L    | L <sub>1</sub> | L <sub>2</sub> | B <sub>2</sub> | B <sub>1</sub> | H    | H <sub>1</sub> | H <sub>2</sub> | Magnetic Force | Weight  | Box  | Carton  |           |
|-------------|-----------|--------|------|----------------|----------------|----------------|----------------|------|----------------|----------------|----------------|---------|------|---------|-----------|
| 140-050-005 | MC-FS3W   | White  | 24.2 | 22.4           | 15             | 9.6            | 8.2            | 12.3 | 10.9           | 0.9            | 12.7 N         | 1.3 kgf | 5 g  | 60 pcs  | 2,160 pcs |
| 140-050-086 | MC-FP5W   | White  | 40   | 33.9           | 21.6           | 10             | 8              | 13.5 | 11.2           | 1.2            | 21.6 N         | 2.2 kgf | 9 g  | 200 pcs | 2,000 pcs |
| 140-050-293 | MC-FS10W  | White  | 64   | 54.5           | 43             | 10             | 8              | 14   | 11.5           | 1.5            | 44.1 N         | 4.5 kgf | 20 g | 50 pcs  | 1,000 pcs |
| 140-055-099 | MC-FB10   | White  | 64   | 54.5           | 43             | 10.5           | 9.7            | 14   | 11.5           | 1.5            | 54.9 N         | 5.6 kgf | 25 g | 500 pcs | -         |
| 140-050-006 | MC-FS3B   | Black  | 24.2 | 22.4           | 15             | 9.6            | 8.2            | 12.3 | 10.9           | 0.9            | 12.7 N         | 1.3 kgf | 5 g  | 60 pcs  | 2,160 pcs |
| 140-050-087 | MC-FP5B   | Black  | 40   | 33.9           | 21.6           | 10             | 8              | 13.5 | 11.2           | 1.2            | 21.6 N         | 2.2 kgf | 9 g  | 200 pcs | 2,000 pcs |
| 140-050-294 | MC-FS10B  | Black  | 64   | 54.5           | 43             | 10             | 8              | 14   | 11.5           | 1.5            | 44.1 N         | 4.5 kgf | 20 g | 50 pcs  | 1,000 pcs |