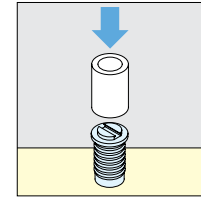
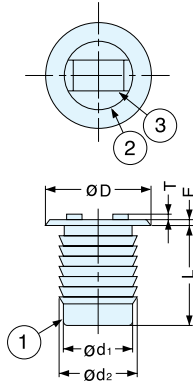


MAGNETIC CATCH



IS-4



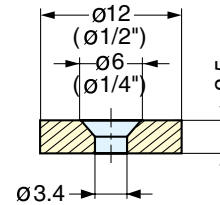
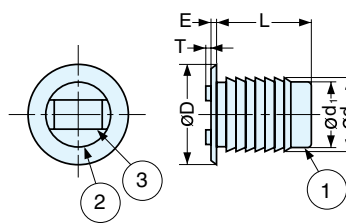
No.	Part Name	Material	Finish/Color
①	Housing	Polypropylene	White(WHT)/Black(BLK)
②	Yoke	Steel	Yellow Zinc Chromate
③	Magnet	Ferrite	-

Item No.	D	L	E	T	d ₁	d ₂	Magnetic Force (kg)	Weight (g)	Box (pcs)	Carton (pcs)
IS-4/WHT	14 (35/64")	14 (35/64")	0.7	1.2	11	12	2.5 (5.5 lbs)	7.7	200	3000
IS-4/BLK										

MAGNETIC CATCH



MC-IS



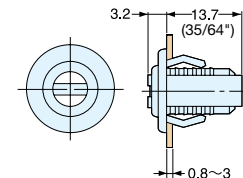
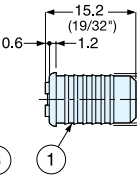
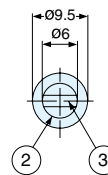
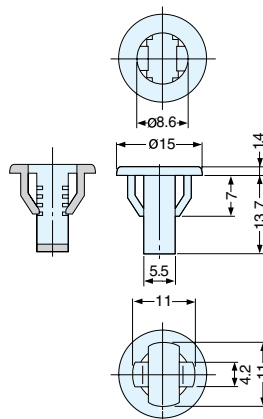
No.	Part Name	Material	Finish/Color
①	Housing	Polyamide	White(WHT)/Black(BLK)
②	Yoke	Steel	Yellow Zinc Chromate
③	Magnet	Ferrite	-

Item No.	Body Color	D	L	E	T	d ₁	d ₂	Magnetic Force (kg)	Weight (g)	Box (pcs)	Carton (pcs)
MC-IS2WP	White	10 (25/64")	13.8 (35/64")	1.0	0.7	8	8.6	1.0 (2.2 lbs)	4.7	200	5000
MC-IS2BP	Black									100	3000
MC-IS4WP	White	14 (35/64")	14.0 (35/64")	0.7	1.2	11	12.0	2.5 (5.5 lbs)	7.7	200	5000
MC-IS4BP	Black									100	3000

MAGNETIC CATCH (OPTIONAL SNAP-IN HOLDER)



NB01



No.	Part Name	Material	Finish/Color
①	Housing	Polyamide	White(WHT)
②	Yoke	Steel	Yellow Zinc Chromate
③	Magnet	Ferrite	-

■ Body Part

Item No.	Magnetic Force (kg)	Weight (g)	Box (pcs)	Carton (pcs)
NB01	1.1 (2.4 lbs)	2	500	5000

■ Snap-In Holder (Option)

Item No.	Weight (g)
NB01H	0.5

Door Thickness	Cut Out Dimensions
0.8-1.4	11.5
1.5-3.0	12.0