

MAGNETIC CATCH MC-FS10, MC-FS17W Snap-in Installation

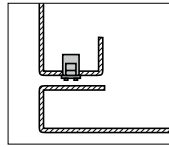


● MC-FS17W has stronger magnetic force than MC-FS10.

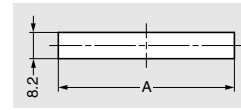
[Remarks]

● Be sure to read the "Cautions" **1**.

[Installation]

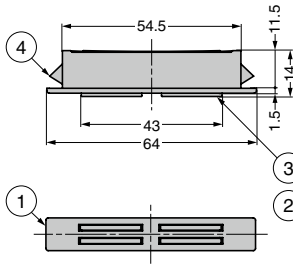


[Cut Out Dimensions]



[Bore Dimensions]

Door Thickness	A
0.8	55
1.0	
1.2	
1.6	
2.0	56.5

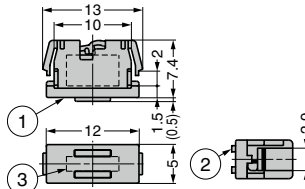


No.	Part Name	Material	Finish / Colour
①	Body	ABS	White, Black (MC-FS10B)
②	Yoke	Steel (SPCC)	Coloured Zinc Chromate (Trivalent)
③	Magnet	Ferrite	-
④	Spring	POM	White (MC-FS10), Red (MC-FS17W)

RtHS	CAD	Item Code	Item Name	Colour	Magnetic Force N	Magnetic Force kgf	Weight (g)	Box (pcs)	Carton (pcs)
		140-050-293	MC-FS10W	White	44.1	4.5	17.1	50	1000
		140-050-294	MC-FS10B	Black				50	1000
		140-050-334	MC-FS17W	White	58.8	6	17.8	50	1000

Refer to **1** : P.607

MAGNETIC CATCH CM-2B Snap-in Installation



● Small body allows easy installation around the door.
● Flam retardant resin (UL94V-2).

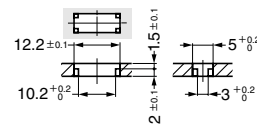
[Specifications]

● Operating temperature: -10°C ~60°C

[Remarks]

● Be sure to read the "Cautions" **1**.

[Cut Out Dimensions]

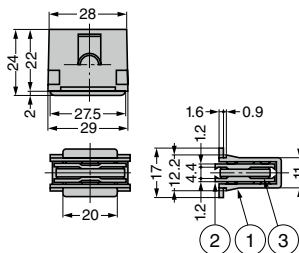


No.	Part Name	Material	Finish / Colour
①	Body	PA	Black
②	Yoke	Steel (SPCC)	Black Chromate (Trivalent)
③	Magnet	Ferrite	-

RtHS	CAD	Item Code	Item Name	Magnetic Force N	Magnetic Force kgf	Weight (g)	Box (pcs)	Carton (pcs)
		140-011-122	CM-2B	3.9	0.4	1	200	-

Refer to **1** : P.607

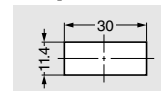
MAGNETIC CATCH MC-SS30 Snap-in Installation



[Remarks]

● Be sure to read the "Cautions" **1**.

[Cut Out Dimensions]



No.	Part Name	Material	Finish / Colour
①	Body	ABS	Ivory
②	Yoke	Steel (SPCC)	Coloured Zinc Chromate (Trivalent)
③	Magnet	Ferrite	-

RtHS	CAD	Item Code	Item Name	Door Thickness	Magnetic Force N	Magnetic Force kgf	Weight (g)	Box (pcs)	Carton (pcs)
		140-050-036	MC-SS30	0.8	29.4	3	22	60	600

Refer to **1** : P.607