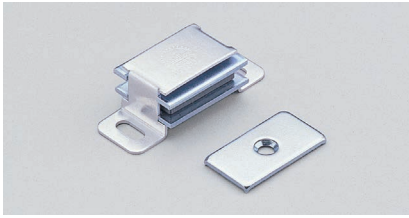
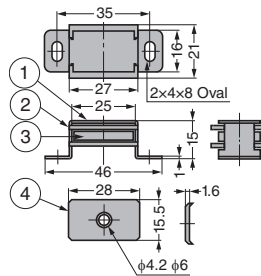


## MAGNETIC CATCH MC-S88



No.	Part Name	Material	Finish
①	Body	Aluminium Alloy	Plain
②	Yoke	Steel (SPCC)	Clear Zinc Chromate
③	Magnet	Ferrite	-
④	Counter Plate	Steel (SPCC)	Clear Zinc Chromate



### [Remarks]

- Be sure to read the "Cautions" 1

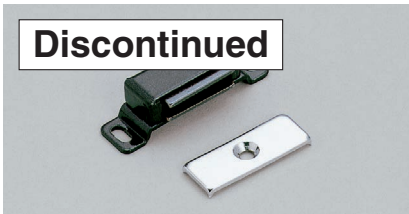
### [Parts Included]

- Counter plate
- Round head wood screw 3.1 × 13 (2 pcs)
- Countersunk head wood screw 2.9 × 13 (1 pc)

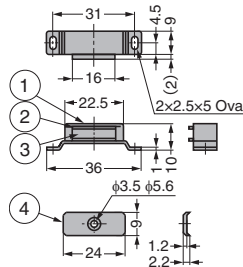
RoHS	CAD	Item Code	Item Name	Magnetic Force N	Magnetic Force kgf	Weight (g)	Box (pcs)	Carton (pcs)
-	SD	140-050-032	MC-S88	14.7	1.5	28.5	24	720

Refer to 1 : P.607

## MAGNETIC CATCH MC16S



No.	Part Name	Material	Finish
①	Body	Aluminium Alloy	Paint/Metallic Brown
②	Yoke	Steel (SPCC)	GB
③	Magnet	Ferrite	-
④	Counter Plate	Steel (SPCC)	Chrome



### [Remarks]

- Be sure to read the "Cautions" 1

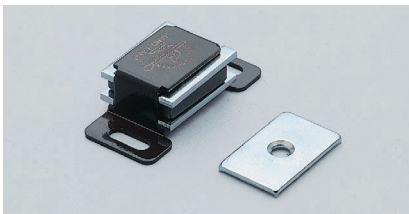
### [Parts Included]

- Counter plate

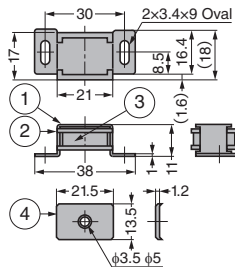
RoHS	CAD	Item Code	Item Name	Magnetic Force N	Magnetic Force kgf	Weight (g)	Box (pcs)	Carton (pcs)
G	SD	140-050-096	MC16S	11.8	1.2	7.5	200	2000

Refer to 1 : P.607

## MAGNETIC CATCH MC-S78



No.	Part Name	Material	Finish / Colour
①	Body	Aluminium Alloy	Brown Enamel Finish
②	Yoke	Steel (SPCC)	Clear Zinc Chromate
③	Magnet	Ferrite	-
④	Counter Plate	Steel (SPCC)	Clear Zinc Chromate



### [Remarks]

- Be sure to read the "Cautions" 1

### [Parts Included]

- Counter plate
- Pan head wood screw 3.1 × 13 (2 pcs)
- Countersunk head wood screw 2.4 × 13 (1 pc)

RoHS	CAD	Item Code	Item Name	Magnetic Force N	Magnetic Force kgf	Weight (g)	Box (pcs)	Carton (pcs)
-	SD	140-050-030	MC-S78	7.8	0.8	17	36	720

Refer to 1 : P.607