

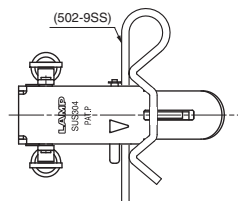
Optional Pins & Counter Plate for STF-C64A, STF-C64B

Sealing Pin

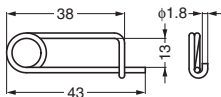
Features

Prevents accidental unlock.

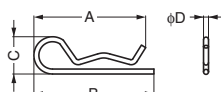
Material	Finish
Stainless Steel (SUS304)	Plain



Item Code	Item Name
120-041-822	502-7SS



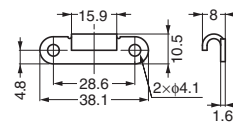
Item Code	Item Name	A	B	C	D
120-041-823	502-9SS	63	66	18	2.6
120-041-825	613-9SS	55	59	15	2.3



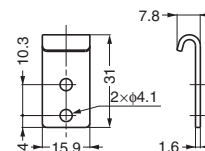
Counter Plate

Material	Finish
Stainless Steel (SUS304)	Polished

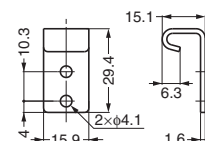
Item Code	Item Name
120-040-415	01-613SS



Item Code	Item Name
120-040-421	02-613SS



Item Code	Item Name
120-040-452	07-613SS

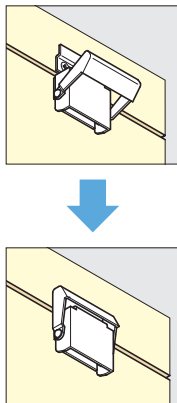


STAINLESS STEEL DRAW LATCH

TEST METHOD 8

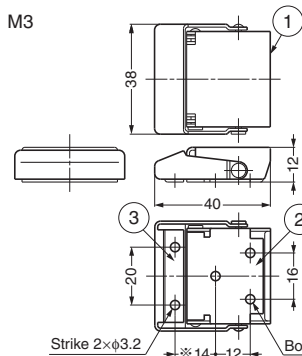
STAINLESS 304 STEEL

STF40



Recommended Screw

M3



Strike 2×φ3.2
*In case that overlap allowance is 0 mm.

No.	Part Name	Material	Finish
①	Body	Stainless Steel (SUS304)	Polished
②	Mounting Plate	Stainless Steel (SUS304)	Polished
③	Strike	Stainless Steel (SUS304)	Polished

Clamping Force by Overlap Allowance

Overlap Allowance mm	Clamping Force N	Clamping Force kgf
1	49	5

Item Code	Item Name	Load Capacity	Load Capacity	Weight	Box	Carton
120-044-025	STF40	300 N	30.6 kgf	30 g	30 pcs	300 pcs

STAINLESS STEEL DRAW LATCH (SPRING LOADED)

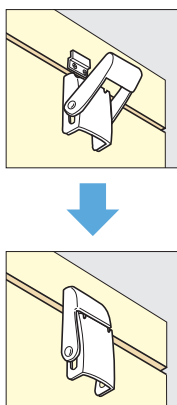
TEST METHOD 7

TEST METHOD 8

TEST METHOD 17

STAINLESS 304 STEEL

STF80

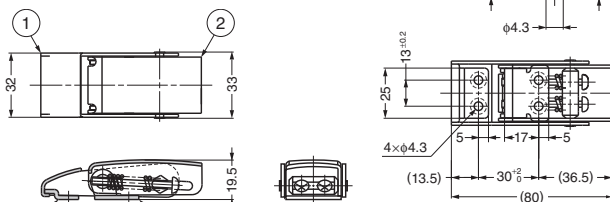


Features

- Spring loaded latch provides constant holding tension for secure latching.
- Resistant to vibration.

Recommended Screw

M4



No.	Part Name	Material	Finish
①	BodyA	Stainless Steel (SUS304)	Satin
②	BodyB	Stainless Steel (SUS304)	Satin
③	Counter Plate	Stainless Steel (SUS304)	Satin
④	Mounting Plate	Stainless Steel (SUS304)	Polished

Item Code	Item Name	Tension Force N	Tension Force kgf	Load Capacity N	Load Capacity kgf	Weight	Box	Carton
120-914-490	STF80	58.8 N	6 kgf	784 N	80 kgf	110 g	12 pcs	180 pcs