



SLU-ELAN

SWING LIFT-UP STAY

LID SUPPORTS

SWING LIFT-UP STAY



Features

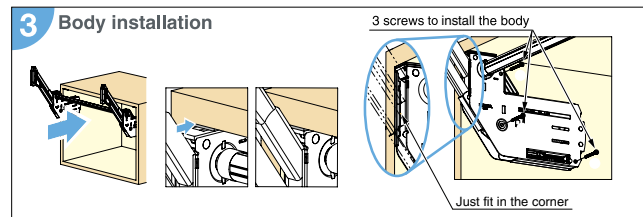
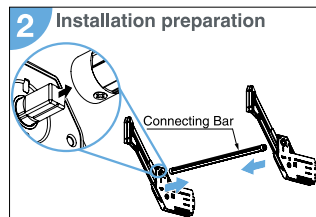
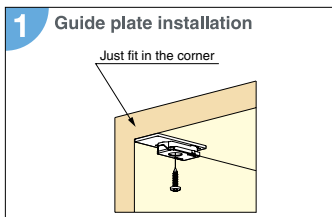
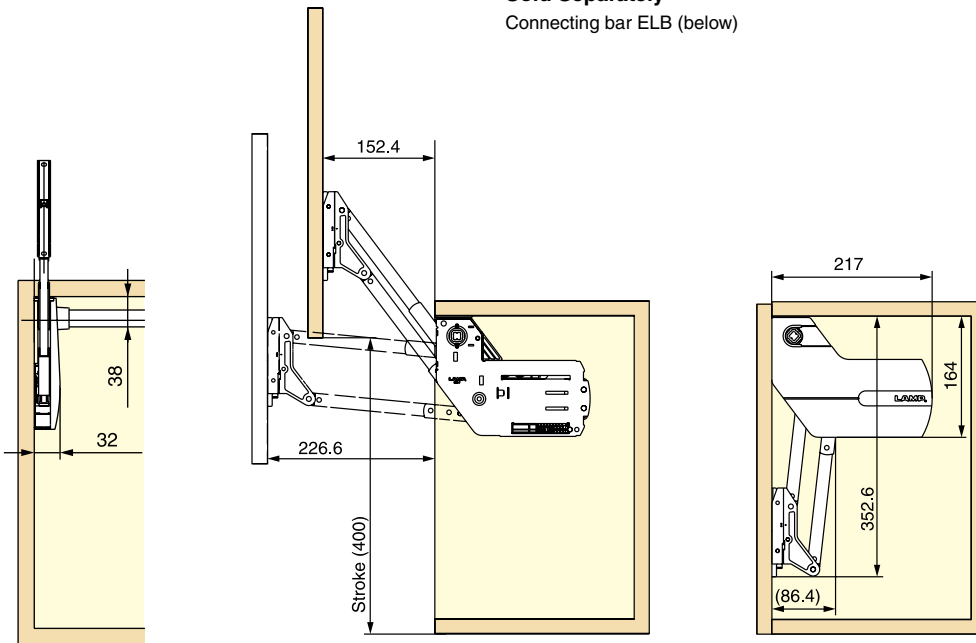
- For upward-opening flap doors.
- Equipped with:
  - Lift assist (to make flap doors feel lighter)
  - Free stop (holds position at any angle with a certain range)
  - Soft-closing (slows down closing speed to prevent slamming near closing radius)
- Successfully passed 30,000 open/close cycles in a private test.
- Placed at the top of interior of the cabinet, significantly reducing dead space and not getting in the way when installing shelves.
- Easy alignment
- Fast and easy installation: Body is attached to mounting plate (on flap) by simply snapping it in.

Parts Included

- Mounting plate for main body (2 pcs)
- Guide plate (2 pcs)
- Countersunk head tapping screw 3.5x38 for main body (6 pcs)
- Binding head tapping screw 3.5x15 for mounting plate (6 pcs)

Sold Separately

Connecting bar ELB (below)



Item Code	Item Name	Door Weight	Material	Finish/Colour	Weight	Carton
180-022-312	SLU-ELAN S4	5.0-6.5 kg	Aluminium Alloy, ABS	Anodized, Light Grey	3.0 kg	5 sets
180-022-313	SLU-ELAN L4	6.5-8.0 kg	Aluminium Alloy, ABS	Anodized, Light Grey	3.0 kg	5 sets
180-022-314	SLU-ELAN M4	8.0-9.5 kg	Aluminium Alloy, ABS	Anodized, Light Grey	3.1 kg	5 sets
180-022-315	SLU-ELAN H4	9.5-11.0 kg	Aluminium Alloy, ABS	Anodized, Light Grey	3.2 kg	5 sets

\*Inside cabinet height is Min. 360 mm / \*Door weight includes handle.

Connecting Bar (Sold Separately)

Item Code	Item Name	Cabinet Width	Cabinet Inside Width	Weight	Carton
180-022-319	ELB-480	600 mm	556-566 mm	184 g	5 pcs
180-022-320	ELB-780	900 mm	856-866 mm	298 g	5 pcs
180-022-321	ELB-1080	1200 mm	1156-1166 mm	411 g	5 pcs
180-022-322	ELB-1380	1500 mm	1456-1466 mm	526 g	5 pcs
180-026-323	ELB-1680	1800 mm	1756-1766 mm	650 g	5 pcs

\*For other dimensions, the bar can be cut on site.

